

Power Divider, 8-way, 2-18GHz, SMA Female

WM8PD-2-18-S

Description

WM8PD-2-18-S is a wideband 8-way in-line power splitter covering a continuous bandwidth of 2 to 18 GHz in an aluminum enclosure measuring 5.75 x 4.46 x 0.38 inches. One product covers S, C, X and Ku bands. Connectors are stainless steel for ruggedness and durability. The device is RoHS compliant but lead solder is available for special order versions for military applications. The device covers several of the military letter bands. The isolation is typically 19dB between output pairs, and approaches 30dB between non-adjacent outputs. Our unique design approach provides high performance over a wide bandwidth in a compact enclosure. Assembled and tested in the USA.



Photo is representative.

Specifications	Min.	Typ.	Max.	Units
Frequency	2	--	18	GHz
Impedance	--	50	--	Ohm
Return Loss (Port S)	10	14	--	dB
Return Loss (Port 1-8)	14	20	--	dB
Insertion Loss (above 9.03dB)	--	1.1	2.4	dB
Isolation	16	19	--	dB
Amplitude Balance	--	0.4	1.0	dB
Phase Balance	--	2	10	Degrees
Input Power (CW) ¹	--	--	25	Watts

Mechanical

Connector Interface	SMA-Female
Operating Temperature ²	-55 to +85 °C
Storage Temperature	-55 to +100 °C
Weight Estimate	15 oz (425 g)
Humidity	10-90% non-condensing
Environment	Indoors Use Only
CAGE Code	78YZ0

1. All output ports should be terminated in a 50-ohm load with 1.2:1 max VSWR.

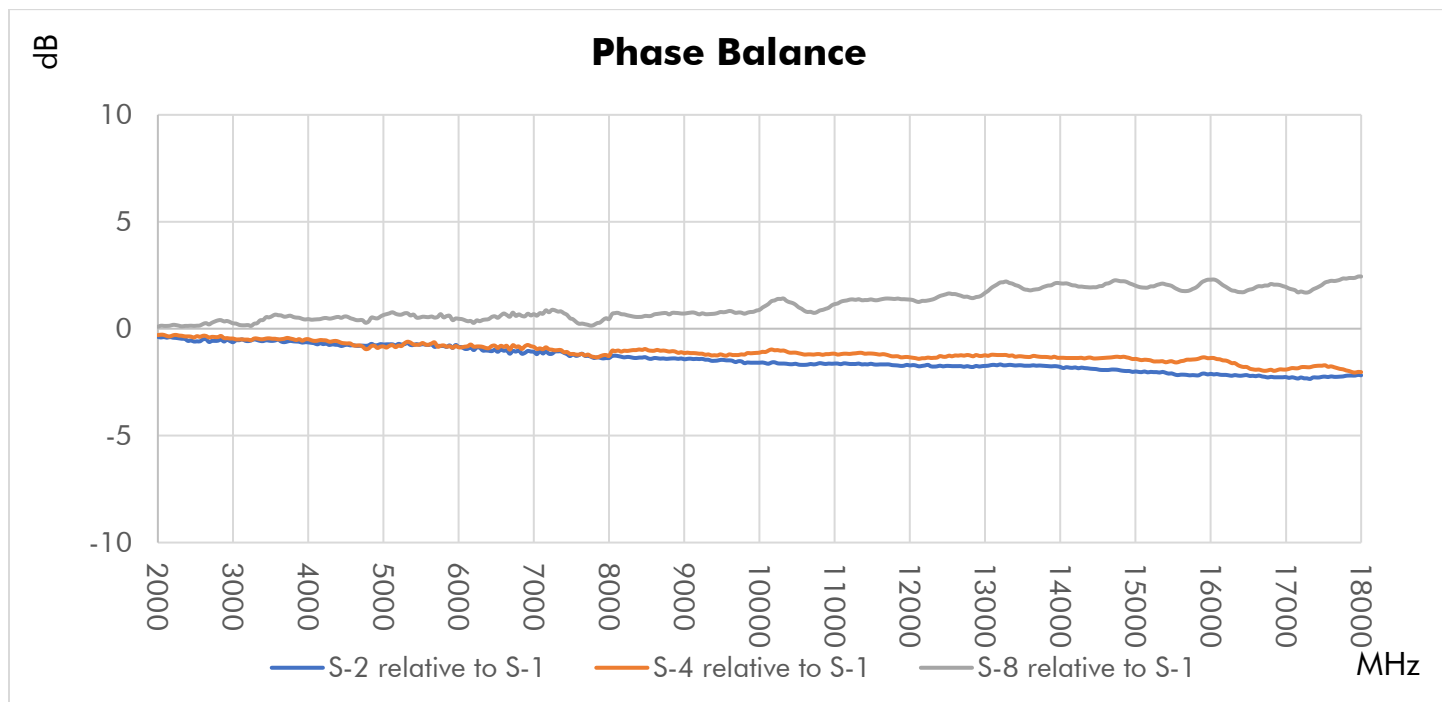
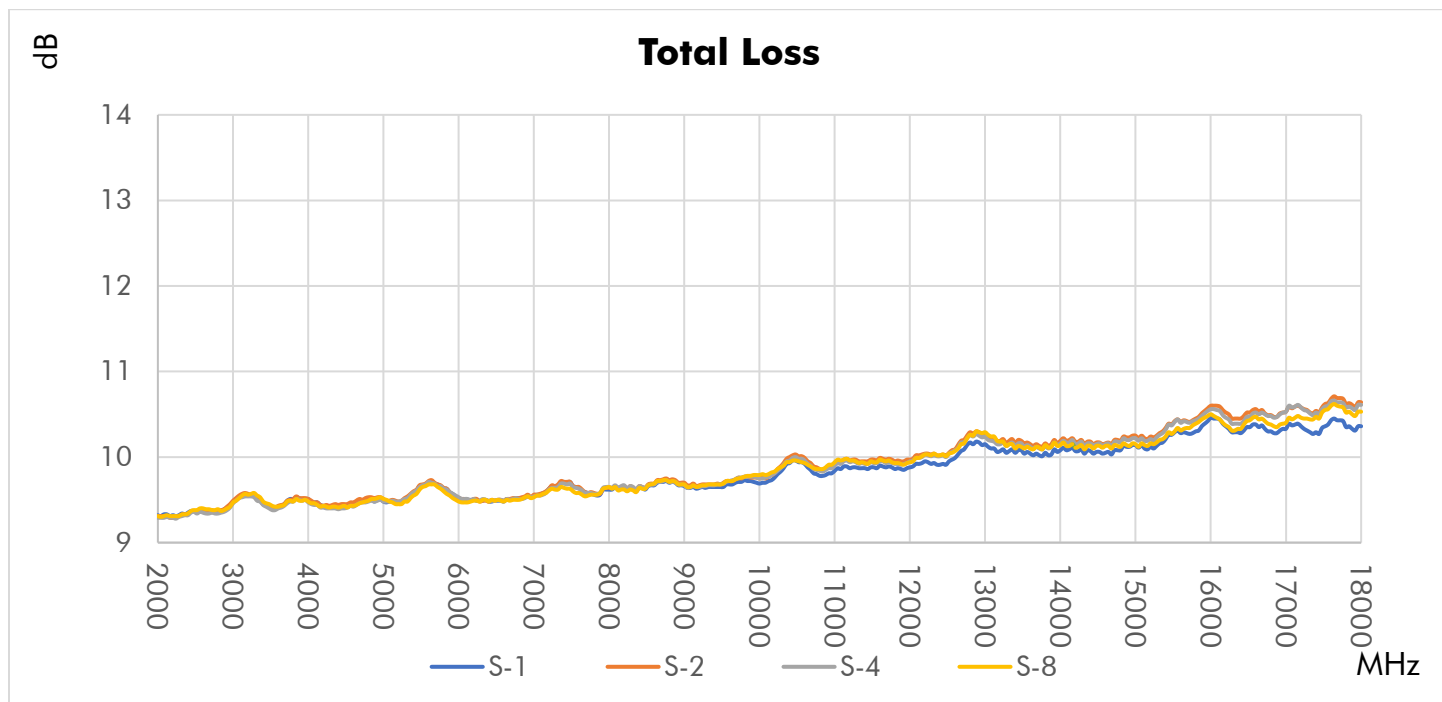
2. Electrical specifications at +25 °C only.

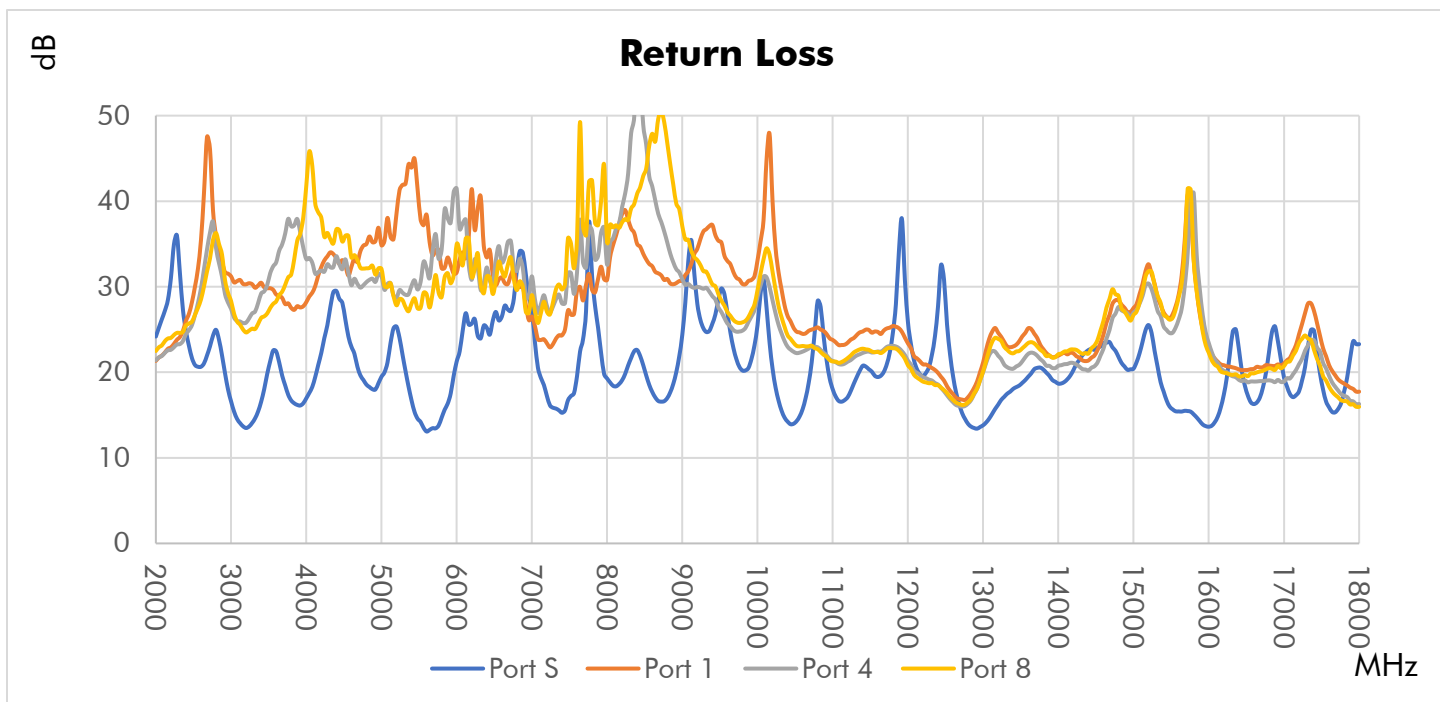
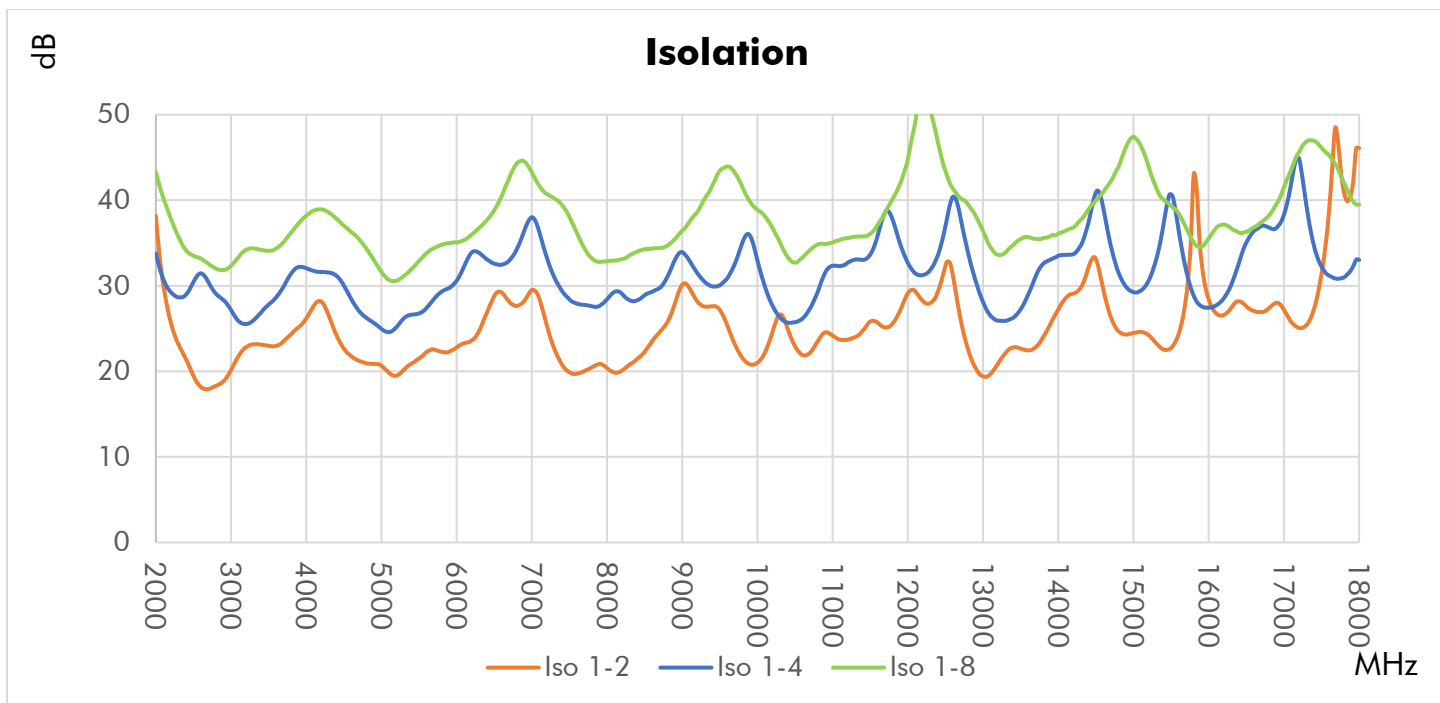
3. To the best of our knowledge at the time of publication.

Materials

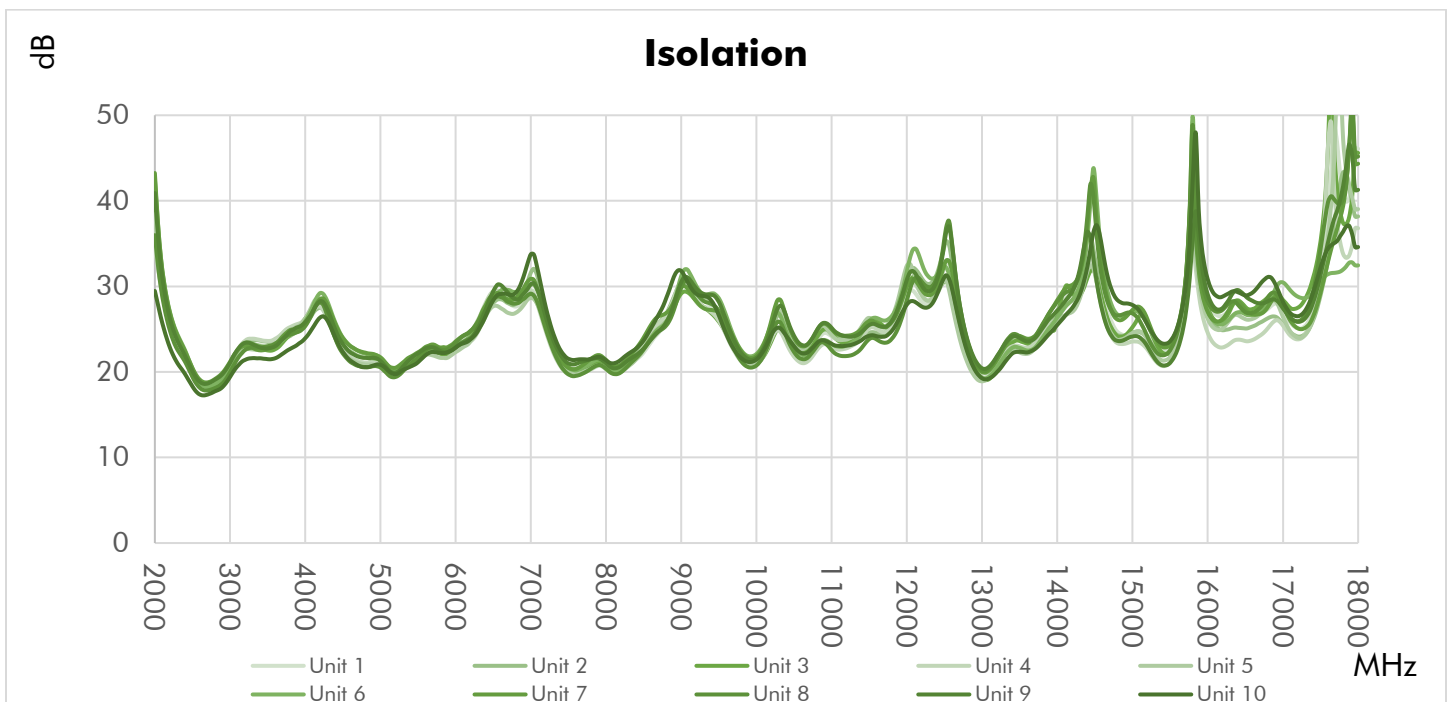
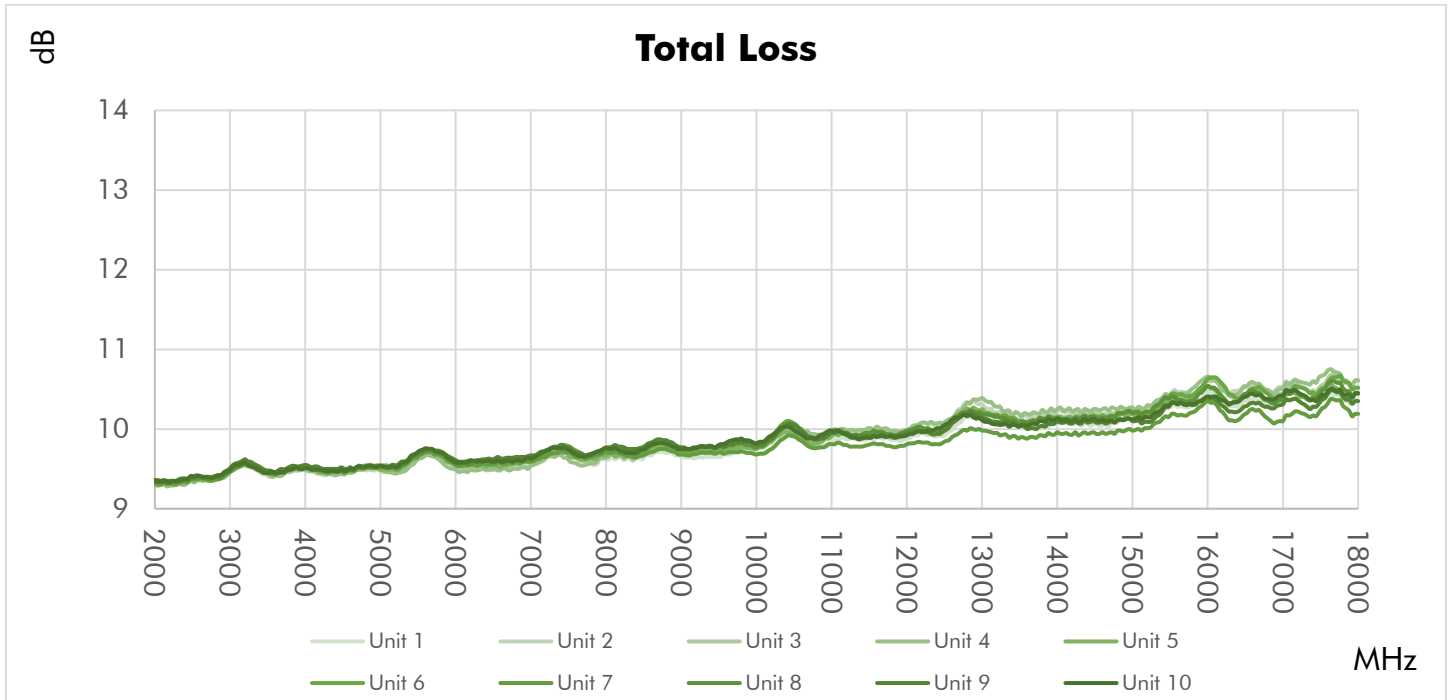
RoHS Compliant ³	Yes
REACH Compliant ³	Yes
Enclosure	Aluminum
Connectors	Stainless Steel
Contacts	Be Cu, Gold Plated
Insulators	PTFE
Finish	Green Paint

Typical Performance at +25 °C





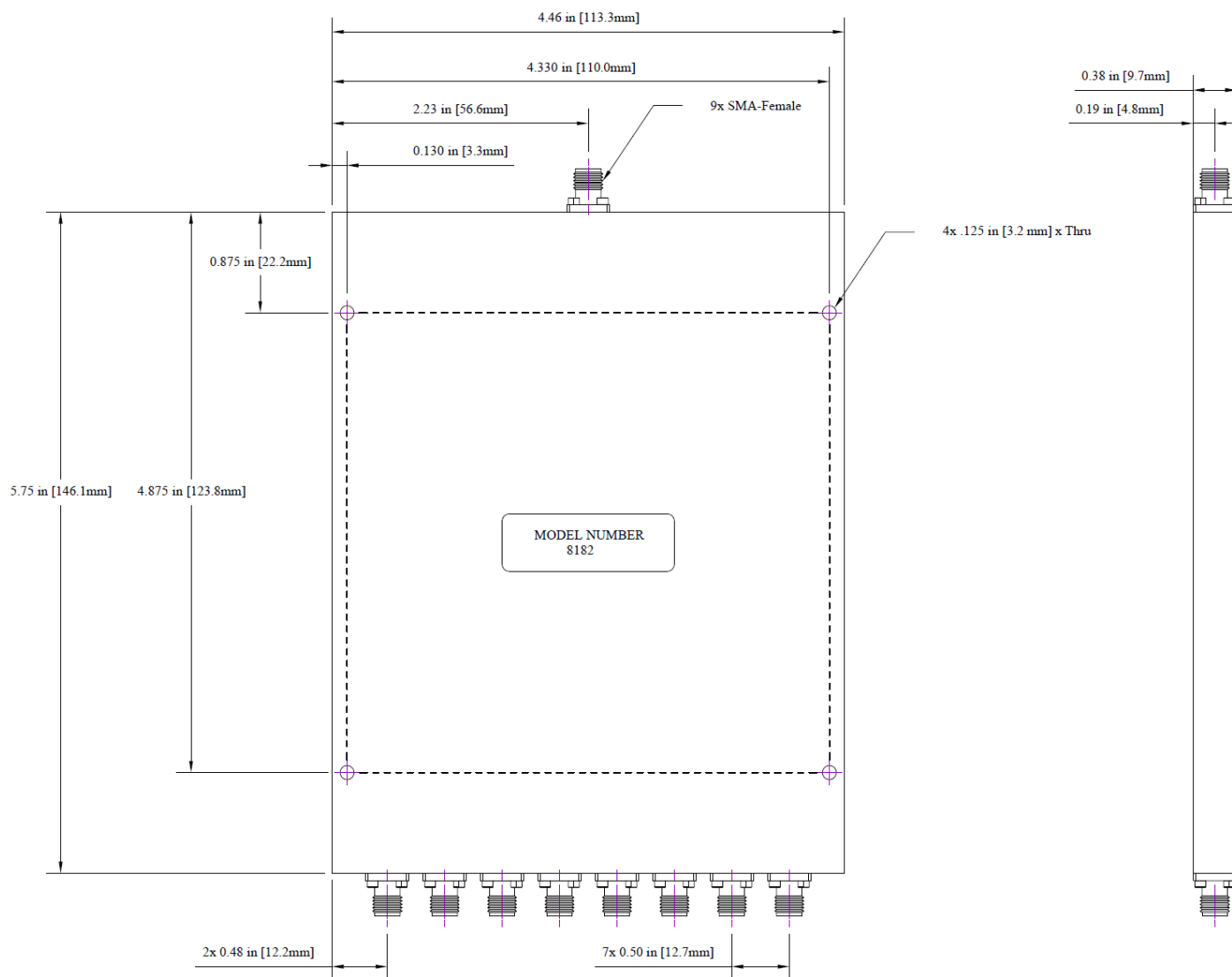
Repeatability in Production



Typical Performance Data

Frequency (MHz)	Return Loss (dB)			Total Loss (dB)		Isolation (dB) 1-2
	Port S	Port 1	Port 6	S-1	S-6	
2000	21.8	22.1	21.8	9.3	9.3	40.3
2500	20.4	31.1	20.5	9.3	9.4	20.5
3000	17.7	32.3	17.6	9.4	9.4	20.7
3500	18.5	22.8	18.6	9.4	9.4	23.2
4000	18.5	26.4	18.5	9.5	9.5	26.1
4500	21.2	26.8	21.3	9.5	9.5	24.4
5000	27.0	24.2	26.9	9.5	9.5	22.9
5500	14.6	22.5	14.6	9.7	9.7	22.6
6000	26.7	24.3	26.7	9.6	9.5	23.3
6500	34.8	22.4	34.5	9.6	9.6	29.4
7000	19.1	19.6	19.2	9.7	9.6	31.2
7500	20.2	23.2	20.2	9.7	9.7	22.2
8000	23.0	25.3	22.8	9.7	9.7	22.4
8500	28.3	22.4	28.4	9.7	9.7	23.7
9000	23.5	24.3	23.5	9.8	9.8	32.1
9500	22.0	30.0	22.1	9.8	9.8	26.8
10000	32.4	25.4	32.6	9.9	9.8	22.3
10500	15.9	32.6	15.9	10.1	10.0	24.1
11000	21.2	26.3	21.3	10.0	10.0	25.0
11500	26.7	24.0	26.9	10.0	10.0	25.9
12000	30.4	28.0	30.5	10.1	10.0	31.7
12500	19.8	23.1	19.8	10.1	10.1	31.7
13000	15.0	17.5	15.0	10.3	10.3	21.5
13500	24.4	20.7	24.3	10.2	10.1	25.6
14000	24.8	21.6	24.9	10.2	10.2	29.5
14500	26.5	18.3	26.4	10.3	10.2	44.0
15000	41.4	19.7	41.7	10.4	10.2	28.2
15500	20.1	23.4	20.0	10.4	10.4	25.6
16000	13.7	19.4	16.7	10.8	10.7	27.3
16500	24.9	29.2	24.8	10.5	10.5	26.9
17000	26.7	32.3	26.6	10.6	10.5	26.9
17500	22.6	21.8	22.6	10.7	10.6	29.6
18000	22.5	18.7	22.6	10.7	10.7	38.5
18500	13.3	18.9	16.2	10.9	10.9	26.9
19000	20.0	23.2	20.0	10.8	10.7	28.7
19500	27.3	24.3	27.3	10.8	10.8	27.8
20000	15.7	18.0	15.7	11.1	11.1	34.4

Outline Dimensions



Outline drawing: OL-8182

Dimensions are in inches, [mm] shown for convenience.

Tolerances on 2-pl decimals: $\pm .03$. 3-pl decimals: $\pm .015$.

The information contained in this document is accurate to the best of our knowledge and representative of the product described herein at the date of publication. It may be necessary to make modifications to the product and/or documentation of the product. Werbel Microwave LLC reserves the right to make such changes as required without notice. Unless otherwise stated, all specifications and dimensions are nominal. Werbel Microwave LLC does not make any representation or warranty regarding the suitability of the product described herein for any particular purpose or application, and Werbel Microwave LLC does not assume any liability arising out of the use of any part of documentation. This document gives only a description of the product(s) and shall not form part of any contract. Please contact a Werbel Microwave LLC Applications Engineer for the most current specification drawing.

Reliability testing was performed as an internal requalification of the product to substantiate the published specifications, which were previously arrived at by calculation and/or similarity to existing products. The results of these tests are provided as a courtesy and shall not form part of a contract or warranty. While reliability tests may depict the product being tested beyond the published specification ratings for the purpose of stress testing the product, this does not imply that the product should be operating above the rated limits for any length of time. Specifications related to reliability (e.g., performance over temperature, power handling, DC current, HI-POT) are "designed to meet" and are not individually tested in production of commercially available products. Please contact a Werbel Microwave LLC Applications Engineer if specific reliability testing is needed on a particular product.