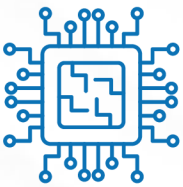


RESA M Ku Multi-Orbit



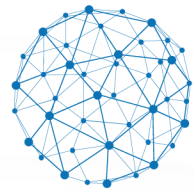
Requtech Electronically Scanned Antenna
- fully integrated satellite terminal for mobility on GEO & LEO



Fully integrated SATCOM terminal



Lightweight



Instantaneous connection for rapid
deployment in the harshest conditions

RESA M Ku Multi-Orbit is a fully integrated **electronically scanned array** antenna terminal for **Multi-Orbit** functionality across **LEO** and **GEO** constellations for **on-the-move** and **on-the-pause applications**. This ruggedized terminal is **MIL-STD** designed with Field replaceable fan bays for all weather **IP66** operations for high reliability and high throughput with efficient acquisition and tracking algorithms. The fully electronically steered solution results in the **lowest Size, Weight, and Power for Maximum Performance**.

RESA series supports Marine, Vehicle & Portable applications



INTELSAT®
Qualified Terminal



requtech 

Made by Sweden: Reliability and Innovation in Challenging Environments



TECHNICAL DETAILS

RF PERFORMANCE	
TX Frequency	GEO 13.75 – 14.50 GHz OneWeb 14.00 – 14.50 GHz
RX Frequency	GEO 10.70- 12.75 GHz OneWeb 10.70 – 12.75 GHz
G/T, typical (boresight)	GEO 11 dB/K OneWeb 11 dB/K
Linear EIRP (boresight)	GEO 49 dBW OneWeb 36.6 dBW (OneWeb required) (The ESA aperture power corresponds to a 50W BUC or larger.)
Polarity	Linear or Circular electronically switched
Side-lobe PDR Tx	PSD Tx FCC 25.218
Tx XPD	25 dB
Rx XPD	25 dB
ELECTRONIC SCANNING SPECIFICATIONS	
Tracking error	< 0.05 dB
Beam update rate	100 Hz
Field of view	160°
Azimuth adjustment	360° with a pointing step size of 0.1°
Elevation adjustment	Electronically beam steering from 10° to 90°

ELECTRICAL SPECIFICATIONS	
Power Supply (excl. Modem)	24V
Power consumption (typical)	GEO 480W OneWeb 370W
INTERFACES	
DC Power	MIL-DTL-5015 (2-pin)
Ethernet	RJ45
ENVIRONMENTAL SPECIFICATIONS	
Operating Temperature	-20° to +55°C / -5° to +130°F
Storage Temperature	-40° to +70°C / -40° to +160°F
Protection	IP66
Wind	250 km/h / 155 mph
WEIGHT AND DIMENSIONS	
Dimensions	L97xW55xH13 cm
Terminal Weight	38 kg



Requitech AB, based in Linköping, Sweden, is at the forefront of satellite communication technology. We specialize in developing high-performance, reliable satellite communication systems. Our mission is to revolutionize communication capabilities, enhancing global connectivity through innovative solutions.

Contact information
Telephone +46 (0)13 311771
E-mail info@requitech.se
www.requitech.com



*The present documentation provides typical specifications and data may change without notice.
© All rights reserved. No part of this publication may be reproduced, distributed, or transmitted in any form or by any means, without the prior written permission of ReQuTech AB.*

