



This guide provides the basic operating procedures for this equipment. Connection of sensors required. For detailed information, see the Operator's Manual, available on our homepage. You can download it with the Quick Response code shown above, or from the URL which is shown below.

https://www.furuno.com/en/support/manuals/?pc=navnet_mfd

The brand, product names, trademarks, registered trademarks, or service marks mentioned in this document belong to their respective holders. The layout of the screen illustrations in this guide may differ depending on your system configuration and settings.

Safety Instructions

Follow the safety instructions listed below and throughout this manual to prevent damage to your equipment or vessel and to prevent harm to the operator or other personnel on-board. The results of failing to follow the instructions and guidelines outlined herein are listed below.

WARNING

Indicates a condition that can cause death or serious injury if not avoided.

CAUTION

Indicates a condition that can cause minor or moderate injury if not avoided.

Warning, Caution

Prohibitive Action

Mandatory Action

WARNING



The radar antenna sends electromagnetic radio frequency (RF) energy. This energy can be dangerous to you, especially your eyes. Do not look at the radiator or near the antenna when the antenna is rotating.

The distances at which RF radiation levels of 100 W/m² and 10 W/m² exist are shown in the table.

Antenna Model	100 W/m ²	10 W/m ²	Antenna Model	100 W/m ²	10 W/m ²
DRS2D-NXT	N/A	0.7 m	DRS6A-NXT (XN12A)	N/A	0.6 m
DRS4D-NXT	N/A	0.7 m	DRS6A-NXT (XN13A)	N/A	0.4 m
DRS4DL+	N/A	0.9 m	DRS12A-NXT (XN12A)	0.2 m	1.9 m
DRS6A X-Class (XN12A)	N/A	2.2 m	DRS12A-NXT (XN13A)	0.15 m	1.8 m
DRS6A X-Class (XN13A)	N/A	1.9 m	DRS25A-NXT (XN12A)	0.3 m	2.8 m
DRS12A X-Class (XN12A)	0.3 m	3.1 m	DRS25A-NXT (XN13A)	0.2 m	2.65 m
DRS12A X-Class (XN13A)	0.2 m	2.9 m	DRS4D X-Class	0.53 m	1.7 m
DRS25A X-Class (XN12A)	0.8 m	7.7 m	DRS4DL X-Class	N/A	0.73 m
DRS25A X-Class (XN13A)	0.7 m	6.8 m			



Check that no person is near the open-type radar antenna before you turn on the radar.

Serious injury or death can occur if a person is hit by a rotating radar antenna.



Turn off the power immediately at the switchboard if water, metallic object or other foreign matter gets inside the equipment.

Failure to turn off the equipment can cause fire or electrical shock.



Do not open the equipment.

Only qualified service technicians are permitted to work inside the equipment.



The front panel of the display unit is made of glass. Handle it with care.

Injury can result if the glass breaks.

WARNING



Keep the display unit away from areas subject to rain or water splash.

Fire or electrical shock can occur if water gets inside the equipment.



Do not disassemble or modify the equipment.

Fire or electrical shock can occur if the equipment is disassembled or modified.



Do not operate the equipment with wet hands.

Electrical shock can occur.



Use the correct fuse.

A wrong fuse can cause fire or serious damage to the equipment.



Do not rely solely on depth indication when navigating.

Grounding can result.



This equipment provides various information useful for navigation. However, never rely solely on a single navigation method, for safety of vessel and crew. Use all available navigational equipment (radar, direction finder, etc.) and always maintain a vigilant watch while underway.



Guard zone warnings help prevent collisions. However, their use does not exempt the navigator from following the relevant guidelines for preventing collision at sea.



Do not leave any objects near the radar antenna.

Fire, electrical shock or injury can result if something gets caught in the radar antenna.



The ARPA function is a valuable aid to navigation. However, the navigator must check all aids available to avoid collision.

- The ARPA automatically tracks an automatically or manually acquired radar target and calculates its course and speed, indicating them with a vector. Since the data generated by the ARPA depends on the selected radar targets, the radar must be optimally tuned for use with the ARPA, to ensure required targets will not be lost or unnecessary targets, like sea returns and noise, will not be acquired and tracked.

- A target is not always a landmass, reef, ship, but can also be returns from the sea surface and from clutter. As the level of clutter changes with the environment, the operator must correctly adjust the sea and rain clutter controls and the gain control so that the target echoes do not disappear from the radar screen.

CAUTION



Do not insert or remove the microSD card while the power is on.

The contents of the microSD card may be damaged.



The fish finder picture is not refreshed when the picture advance setting is "OFF".

It is dangerous to maneuver the vessel while referring to the depth indication in this condition.



Do not use high-pressure cleaners to clean this equipment.

This equipment has the waterproof rating outlined in the specifications, at the back of the Operator's Manual. However, the use of high-pressure cleaning equipment can cause water ingress, resulting in damage to, or failure of, the equipment.

The plotting accuracy and response of this ARPA meets IMO standards. Tracking accuracy is affected by the following:

- Tracking accuracy is affected by course change. One to two minutes is required to restore vectors to full accuracy after an abrupt course change. (The actual amount depends on gyrocompass specifications.)
- The amount of tracking delay is inversely proportional to the relative speed of the target. Delay is approx. 15-30 seconds for the higher relative speed; approx. 30-60 seconds for the lower relative speed. The following factors can affect accuracy:
 - Echo intensity
 - Radar transmission pulse length
 - Radar bearing error
 - Gyrocompass error
 - Course change (own ship and targets)

About the TFT LCD

The TFT LCD is constructed using the latest LCD technology, and displays 99.99% of its pixels. The remaining 0.01% of the pixels may drop out or be constantly lit. Additionally, the LCD has a limited viewing angle and may flicker. However these are not indications of malfunction.

Hereby, Furuno Electric Co., Ltd. declares that the TZT10X/13X/16X/22X/24X/BBX are in compliance with Directive 2014/53/EU, SI 2017/1206. The full text of the EU/UK declaration of conformity is available at the following internet address:

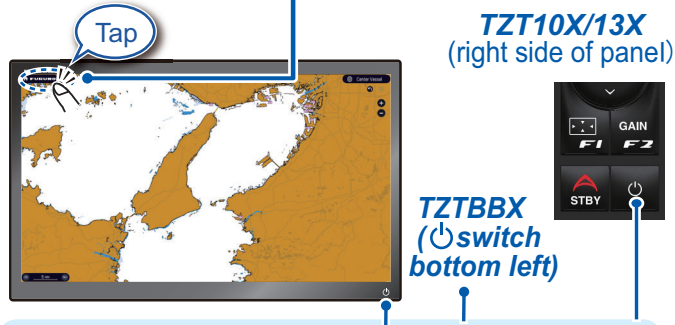
http://www.furuno.com/en/support/red_doc

- Transmit Frequency
Wireless LAN: 2.412 to 2.462 MHz, Bluetooth: 2402 to 2480 MHz
- Output Power
Wireless LAN: 10 dBm E.I.R.P., Bluetooth: 10 dBm E.I.R.P.

Operational Overview

Icon (home/displays), power switch operations

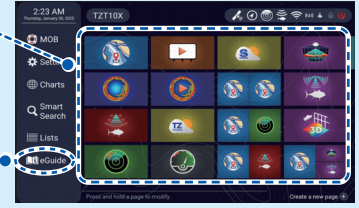
TZT16X/22X/24X



[FURUNO] icon
Displays the home page.

Display icons (max. 32 on Home page)

"eGuide" provides an abbreviated operator's guide.



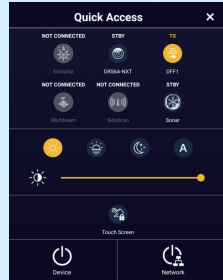
Home page

Power off

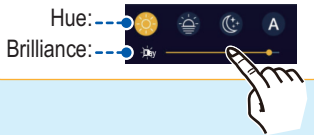
Device: Powers off this unit.
Network: Powers off all NavNet TZtouch series units (TZT10X/13X/16X/22X/24X/BBX/9F/12F/16F/19F/2BB/9E/13E) in network.

Power switch

- Turns on power.
- Shows [Quick Access] window.

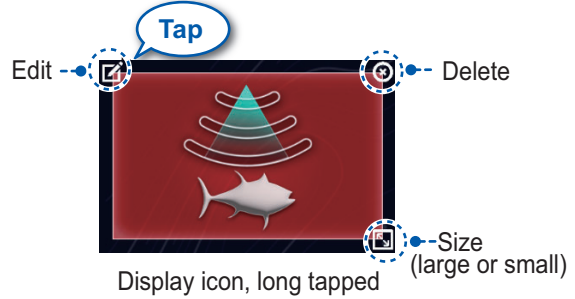


Brilliance, Hue



How to edit a display icon

Long-tap a display icon to resize, delete or change its contents, then tap to confirm. You can also rearrange the icons by long-tapping and dragging.



How to select a display

- Tap a display icon on the Home page (see illustration above).
- Tap a display icon on the Quick page.



Swipe downward from top of display



Quick page

Touchscreen operations

Tap



- Select an item on a menu.
- Tap the display or an object to show the corresponding Pop-up menu.

Drag, swipe



- Move the chart.
- Scroll the menu.
- Show Slide-out menu, Layers menu.

Pinch



Zoom in Zoom out

- Zoom in, zoom out the chart plotter and weather displays.
- Change the range on the radar and fish finder displays.

Range buttons



For the slider bar, drag the slider bar thumb, or tap the slider bar.

Two finger (long) tap



Does the function assigned to [Two Finger (Long) Tap Function] in the [Settings] - [General] - [This Display] menu.

Two finger drag



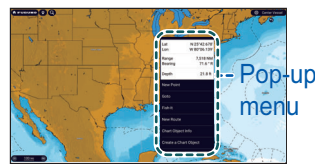
Change the viewpoint position on the 3D display.

Menu operation

Pop-up menu

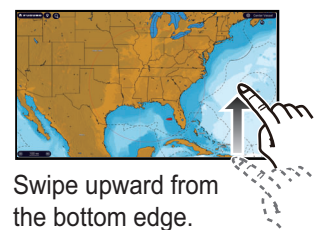


Tap screen (applicable point, object, etc.).

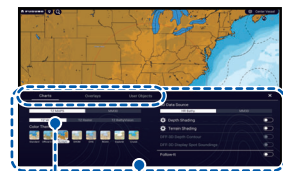


Tap the required function. (">" indicates additional options.)

Layers menu



Swipe upward from the bottom edge.



Tap the required function. (To switch between menus, swipe or tap applicable tab.)

Slide-out menu



Swipe leftward from the right edge.



Tap the required function.

Icon color and function state
Yellow: ON, White: OFF

Settings menu

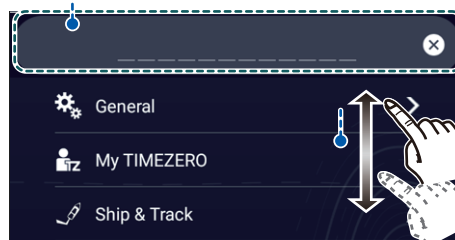


Tap the [FURUNO] icon.

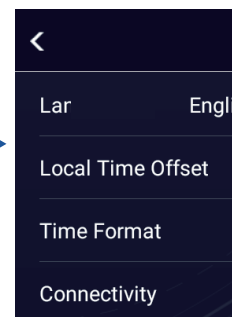


Tap [Settings].

Menu search bar



Drag to find required menu, then tap item.



Tap the required menu item.

Chart Plotter

[FURUNO] icon

Event icon

Navigation bar/Compass bar*

Center Vessel button

Range buttons

Undo, Redo buttons

Status bar

Data window

Heading line (green)

COG vector (dashed red line)

Vessel icon

Track

Inactive route (expanded)

Point

Inactive route (sleeping)*

Scale bar

2D, 3D switch (Switching also available with two-finger drag.)

Display mode (HU/NU) switch

Depth contour switch

Smoothing level switch

0.0 Light Smoothing Step size, 100m

50.0 m

3D: 3D 2D: 3D

*: Arrival or departure position, selectable on the Layers menu.

*: Tap to toggle between navigation and compass bars while navigating a point/route.

Example of the Compass bar

Data Window

Swipe from the left edge of the screen rightward to show the Data window, which shows nav data at the left edge of the screen. To hide the window, swipe the box leftward or tap the [NavData] indication (yellow) in the Slide-out menu.

Data window settings

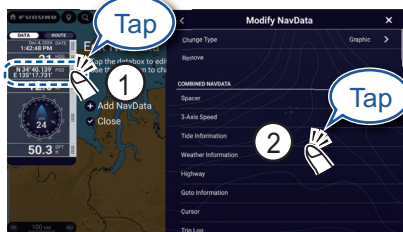


Tap [Edit] to show [Edit NavData] display.

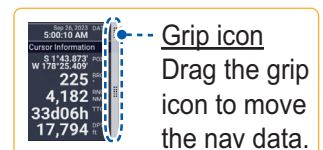
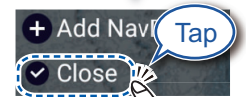
To add nav data:



To remove a data box, or change the displayed data:



- 1 Tap the nav data to remove or change.
- 2 Remove nav data: Tap [Remove]. Change data: Tap data to display.



Points/Boundaries

Points can be entered on the chart plotter display (radar, fish finder and weather displays also) to mark important locations such as a good fishing spot. Point attributes (position, symbol type, color, etc.) are recorded to the Points list. Also, boundaries can be set at the position desired (net position, area to avoid, etc.).

How to enter a point



Tap where to enter a point.



The point is entered on the screen.

How to set a point as destination

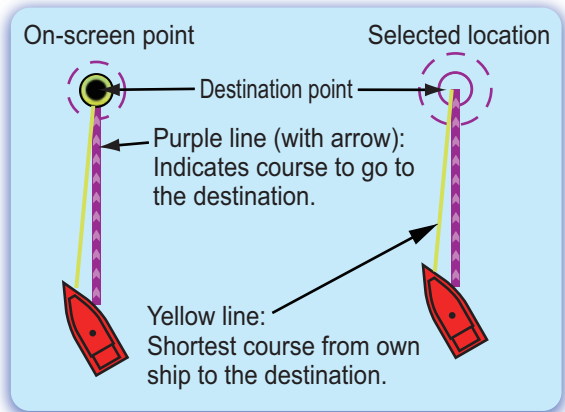
On-screen point



Tap a point or the location to set as destination.



If a point was tapped.



Points list

Sort the list by date, name, icon, color, range.



Tap the point to set as the destination.

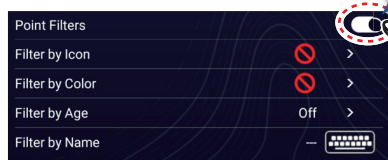


Point filter

You can show/hide points on the screen by using the filter function.



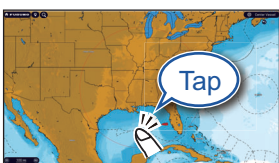
Open [User Objects] tab on the Layers menu.



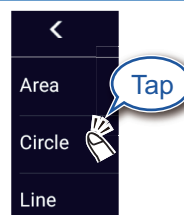
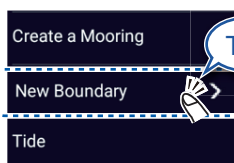
Point filter options are shown at the bottom right corner.

Turn the "Point Filters" to on and set the filter by icon, color, age, or name. For icon or color, when MARK is selected no filter is applied. For age, when Off is selected, no filter is applied.

How to set a boundary



Tap the place where to set a boundary.



Tap the shape to use for the boundary.

[Area]/[Line]: Tap necessary points to complete the boundary, referring to "Route" on the next page.

[Circle]: Drag icons to adjust the size and position, and then tap [End Boundary].

Routes

A route is comprised of a series of waypoints leading to a destination. Routes are saved to the Routes list.

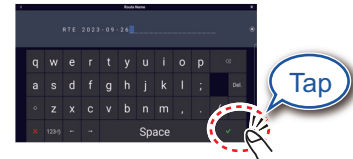
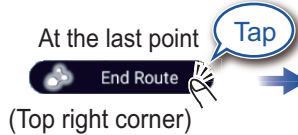
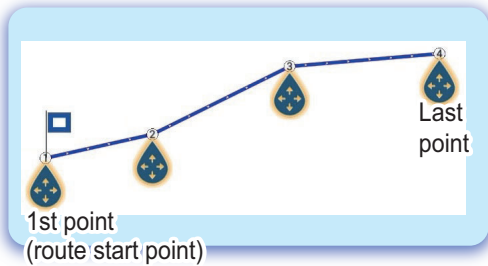
How to create a new route



Tap the first point for the route.



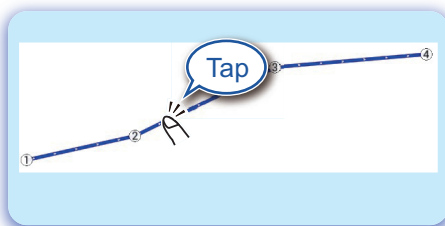
Select [Manual] or [AI Routing]*. Then tap the next point for the route. Repeat this operation to complete the route.
*: For [AI Routing], if you tap two points, the start point and the final point, the system automatically creates a route that it deems navigable.



Enter a name for the route, then tap [✓].

How to follow a route

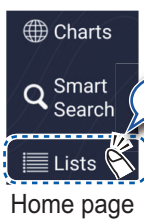
On-screen route



Tap a leg of the route.



Routes list



Route sort options

Date	Name	Color	Length	Range	Add Route	X
TODAY						
RTE-2024-12-16	2 waypoints	— NM	0.866 NM			
RTE-2024-12-16	3 waypoints	— NM	2.846 NM			
RTE-2024-12-16	4 waypoints	— NM	4.916 NM			
RTE-2024-12-16	3 waypoints	— NM	3.708 NM			
MONDAY						
RTE-2024-12-16	2 waypoints	— NM	1.117 NM			

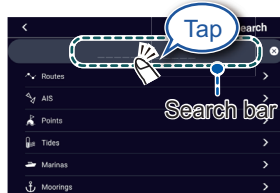
Tap the route to navigate.

ACTIONS

- Route Detail
- Goto
- Reverse Route
- Find On Chart
- Delete

Smart Search function

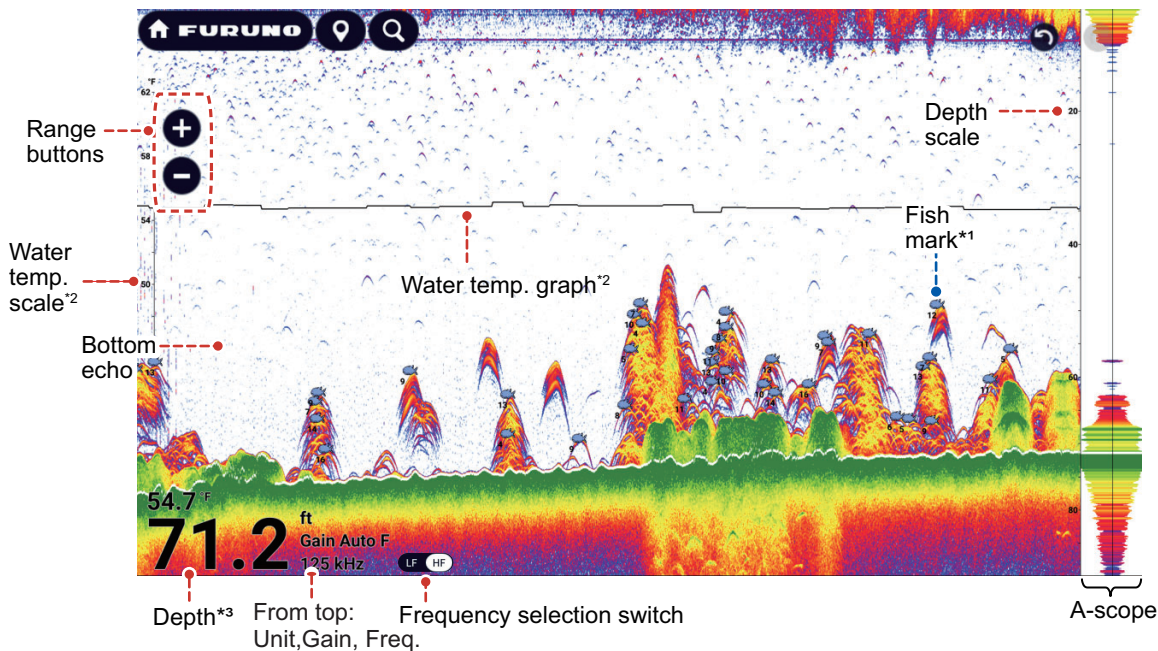
Use the Smart Search function to search for points, routes, etc.



If you have a specific category (routes, points, etc.), tap the category first, then tap the search bar.

A software keyboard appears. Enter at least three characters or numbers to show a list of related items. Tap the desired item to show the details of the item.

Fish Finder



*1: Requires ACCU-FISH™ compatible transducer on the network.

*2: Requires water temperature sensor.

*3: For full screen, you can adjust the depth font size in Home page → [Settings] → [Fish Finder] → [User Settings] → [Digital Depth Size] menu.

Note 1: Names of menu items may be different depending on the transducer connected on the network.

Note 2: TZT10X/13X/16X: Compatible with built-in or network fish finders.

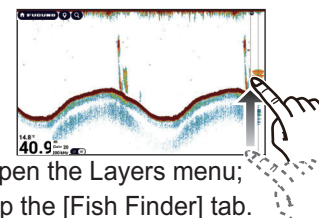
TZT22X/24X/BBX: Compatible with network fish finders.

How to select a frequency

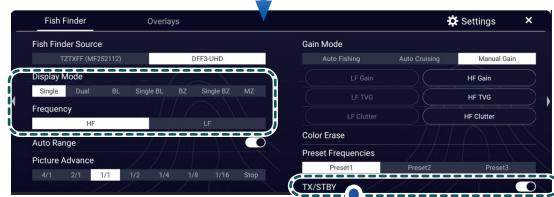
Low frequency: For "normal" use.

High (Middle) frequency: For detailed observation of schools of fish.

Dual frequency: Show both the low and high frequency pictures.



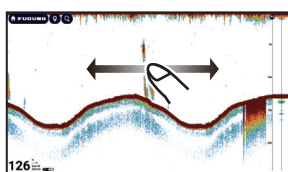
Open the Layers menu; tap the [Fish Finder] tab.



Note

[TX/STBY] toggles between TX and standby.

How to show past echoes (echo history)



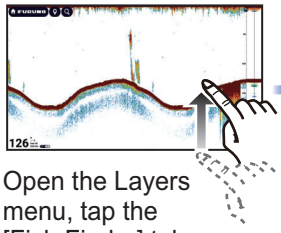
Swipe leftward or rightward to show past echoes.



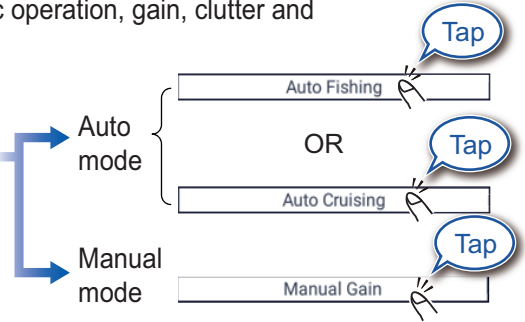
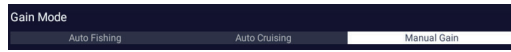
Return to normal display.

How to select the operating mode

The fish finder is available in automatic and manual operation. For automatic operation, gain, clutter and TVG are automatically adjusted.

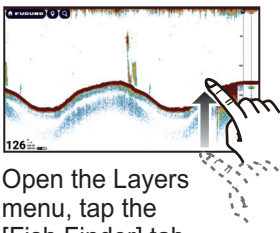


Open the Layers menu, tap the [Fish Finder] tab.

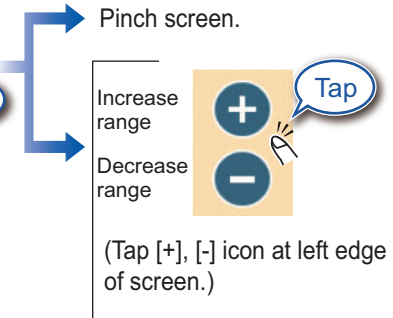
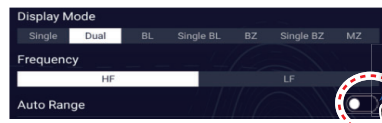


Manual mode

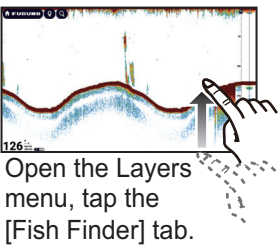
How to change the range



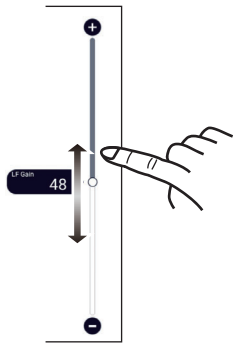
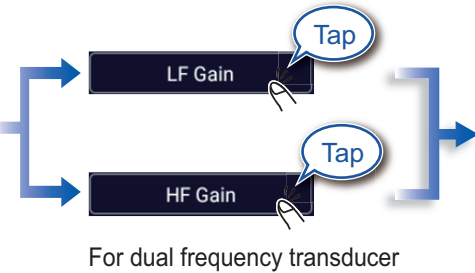
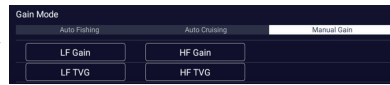
Open the Layers menu, tap the [Fish Finder] tab.



How to adjust the gain



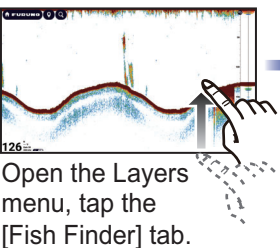
Open the Layers menu, tap the [Fish Finder] tab.



Drag the slider bar to set the gain. (Gain can also be adjusted by tapping the slider bar or +/- buttons.)



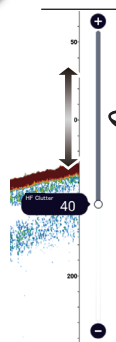
How to reduce clutter



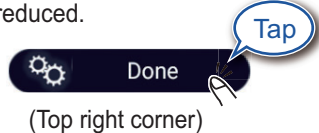
Open the Layers menu, tap the [Fish Finder] tab.



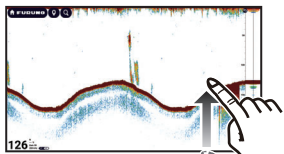
The larger the value, the more the clutter is reduced.



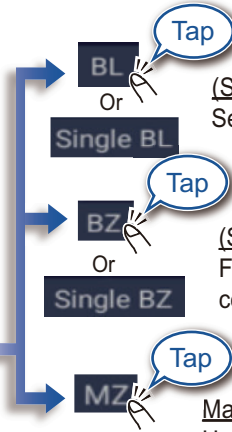
Drag the slider bar to set the range. (Range can also be adjusted by tapping the slider bar or +/- buttons.)



Zoom display



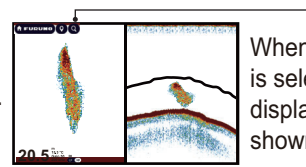
Open the Layers menu, tap the [Fish Finder] tab.



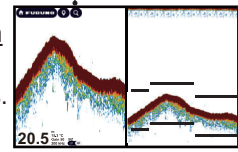
BL
Or
Single BL
Tap
(Single) Bottom Lock
Search for bottom fish.

BZ
Or
Single BZ
Tap
(Single) Bottom Zoom
Find bottom contour and hardness.

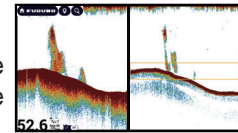
MZ
Tap
Marker Zoom
Help determine the size of a school of fish in the middle layer.



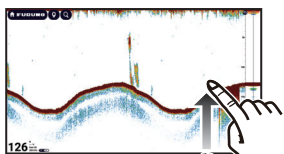
When single frequency is selected, the zoomed display on the left is shown in full screen.



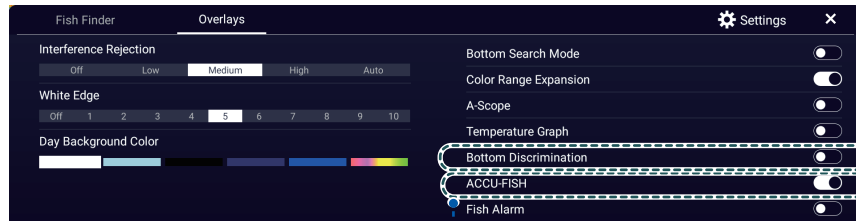
- Short tail indicates soft bottom.
- Long tail indicates hard bottom.



ACCU-FISH™/Bottom Discrimination

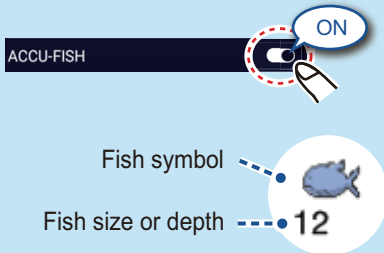


Show the Layers menu, tap the [Overlays] tab.



ACCU-FISH™

Detected fish can be marked with a fish symbol. (Requires ACCU-FISH™ capable transducer on the network.)

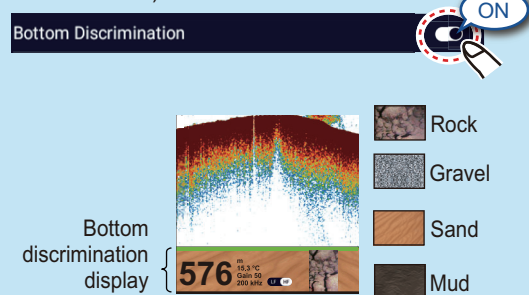


Notice

You can select fish symbol type, and fish size or depth indication from the menu - Home page → [Settings] → [Fish Finder] → [ACCU-FISH].

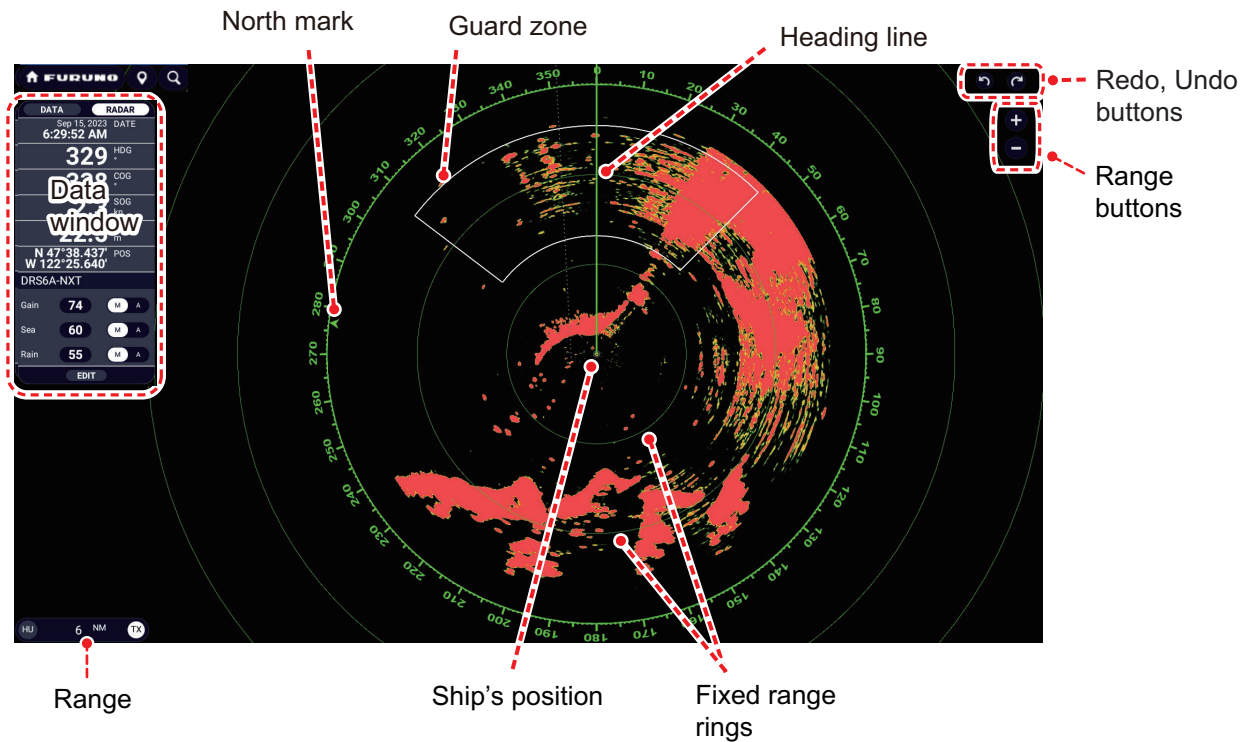
Bottom Discrimination

Show probable bottom hardness. (Requires bottom discrimination capable transducer on the network.)

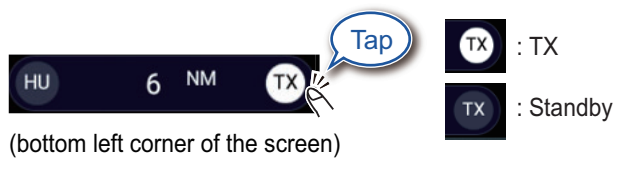


The most probable bottom material.

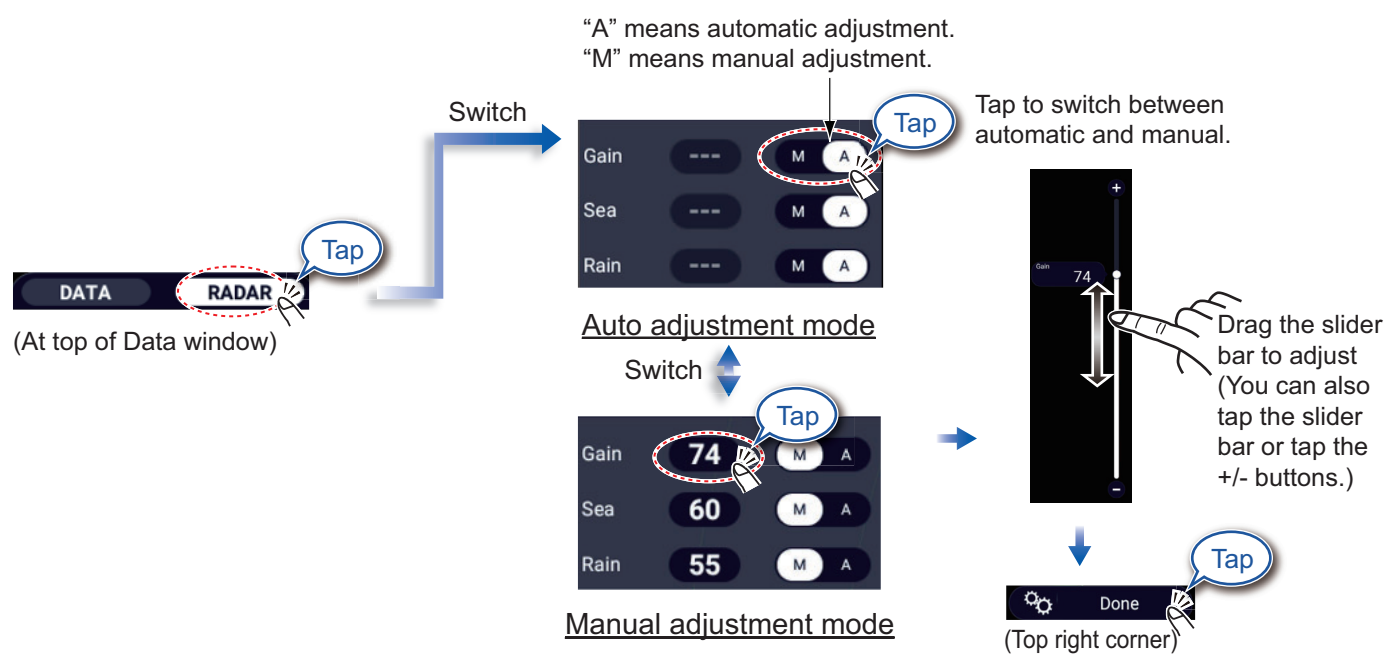
Radar



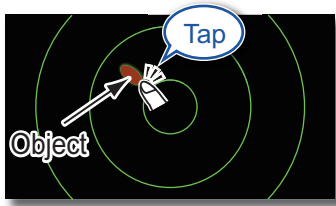
How to switch between standby and TX



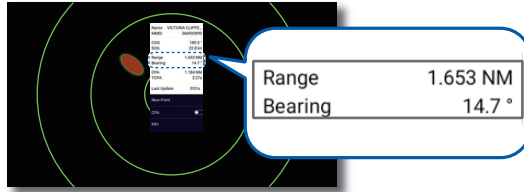
How to adjust the gain / sea clutter / rain clutter



How to measure the range, bearing from own ship to an object

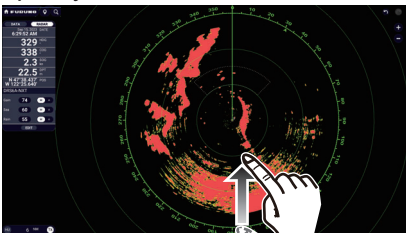


Tap an object to show its range and bearing from own ship.



How to set a guard zone

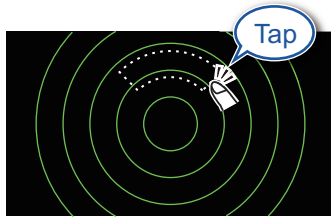
A guard zone alerts you (with aural and visual alarms) when an object (ship, island, reef, etc.) enters the area you specify.



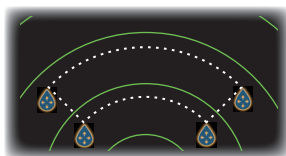
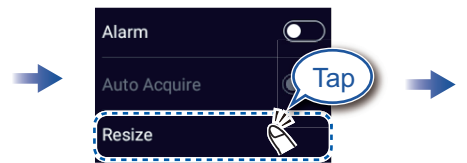
Open the Layers menu, tap the [Overlays] tab.



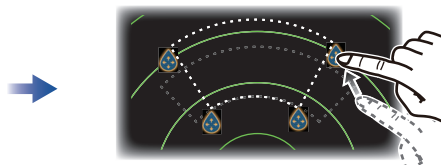
The guard zone appears in dashed lines.



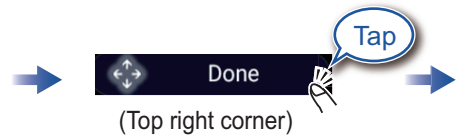
Tap dashed line on guard zone.



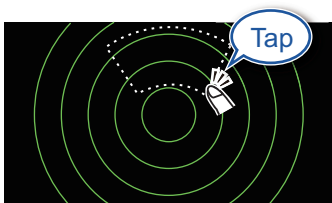
An icon appears at each corner of the guard zone.



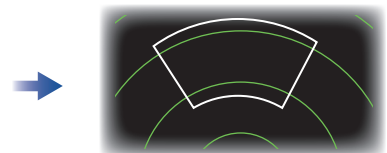
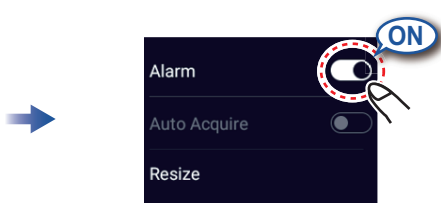
Drag the icons to set guard zone.



(Top right corner)



Tap the guard zone again.

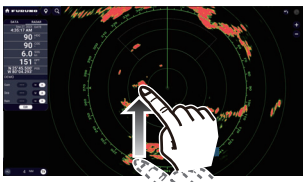


The dashed lines change to solid lines, indicating the guard zone is active.

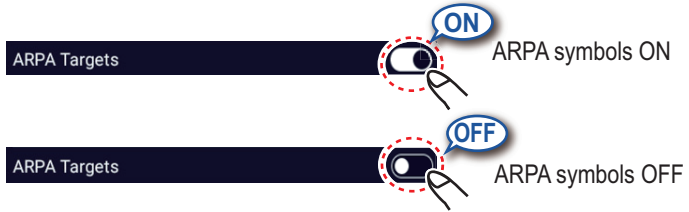
ARPA Operation

ARPA is an anti-collision aid that tracks the movement of other ships to help prevent collision. ARPA not only tracks other ships but also provides their navigation data. Targets can be acquired manually, automatically, or both automatically and manually.

How to show, hide ARPA symbols



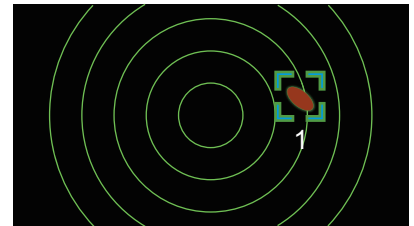
Open the Layers menu, tap the [Overlays] tab.



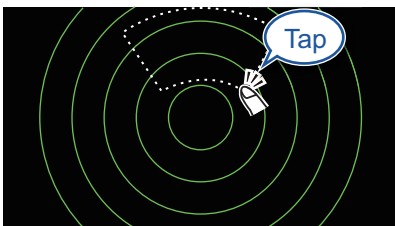
How to manually acquire a target



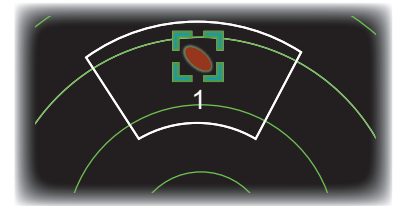
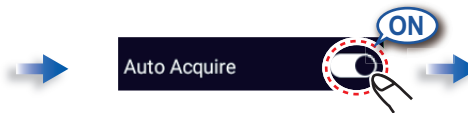
Tap the target to acquire.



How to automatically acquire a target



Set a guard zone, then tap the guard zone.

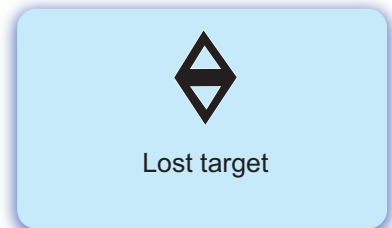
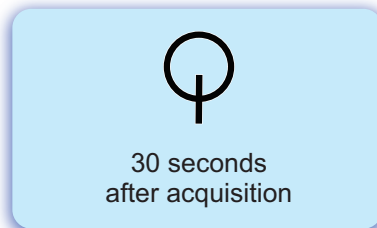


The dashed lines change to solid lines, indicating the guard zone is active.

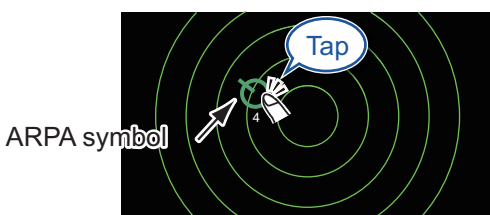
Note

When [Full Auto Tracking Sea Condition] is activated from the [Radar] tab in the Layers menu, targets within 3 NM from your ship are automatically acquired when connected to a DRS-NXT series radar (DRS2D/4D/6A/12A/25A-NXT).

ARPA symbols

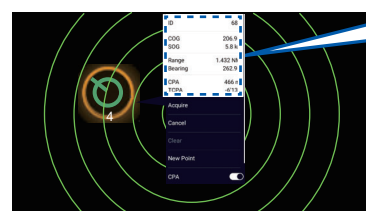


How to display target data



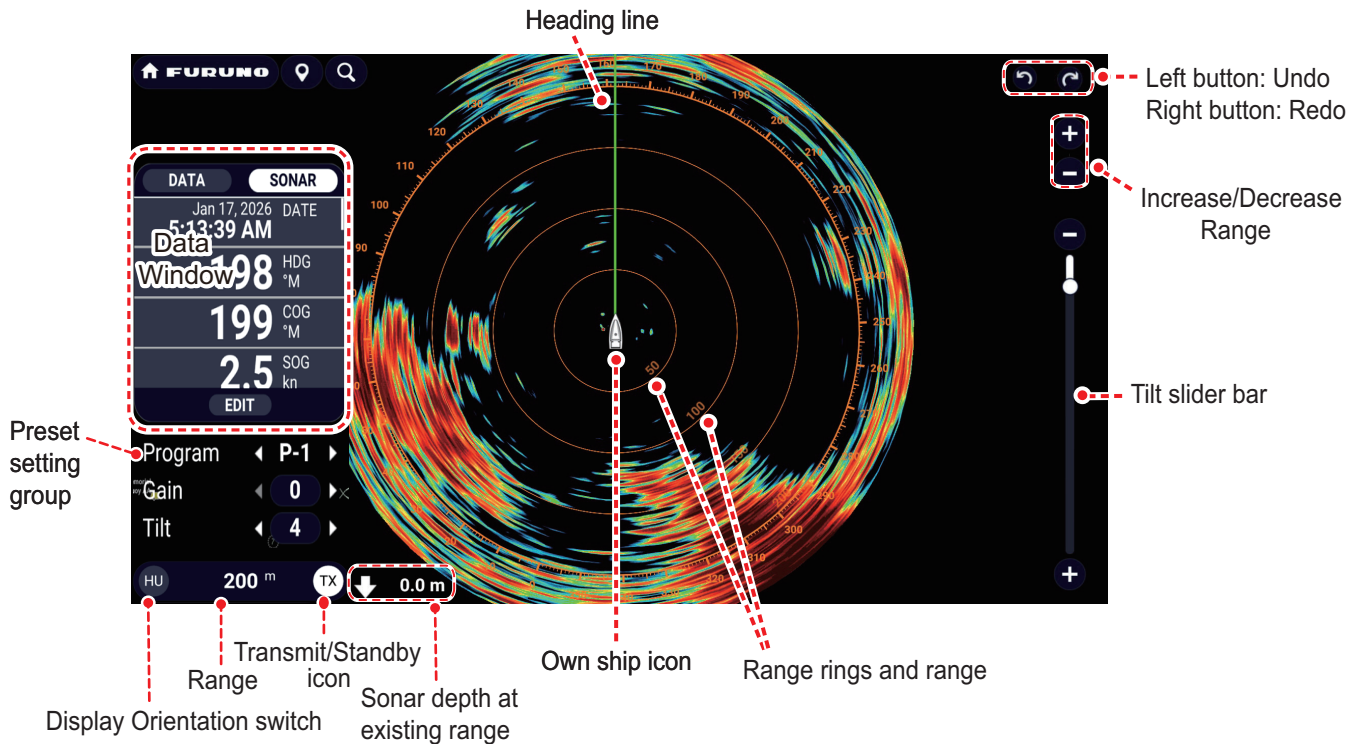
ARPA symbol

Tap an ARPA target to show its data.

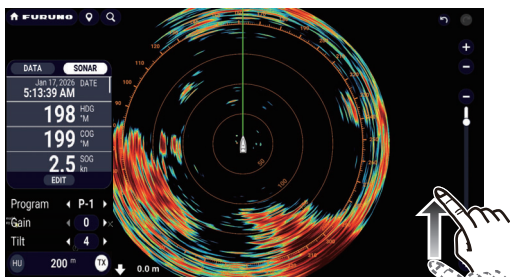


ID	68
COG	206.9 °
SOG	5.8 kn
Range	1.432 NM
Bearing	262.9 °
CPA	466 m
TCPA	-6'13s

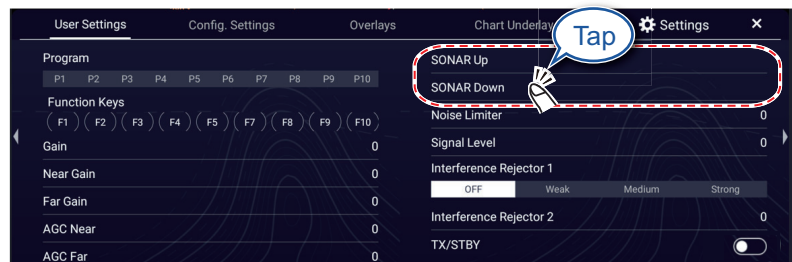
Scanning Sonar



How to protrude (lower) and retract (raise) the transducer



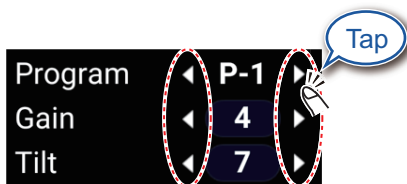
Open the Layers menu, tap the [User Settings] tab.



To lower, tap [SONAR Down]. To raise, tap [SONAR Up].
(When all NavNet TZtouch series on network are turned off, the transducer is automatically retracted.)

Tap [OK].

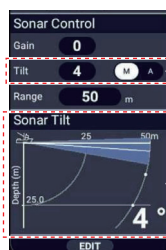
How to adjust the program setting / gain / tilt angle



Tap ◀▶ to change the program key (P-1 to P-10) of pre-determine settings depending on current or targeted fishery, or to increase/decrease the gain and tilt angle value.

Note

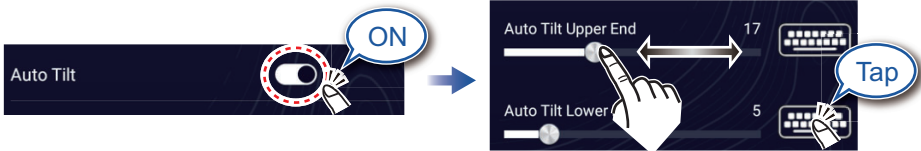
The [Sonar Control] and [Sonar Tilt] can be displayed on the data window. The tilt angle can be adjusted only when the [Tilt] mode is set to [M] (manual) mode from the [Sonar Control] field. The tilt angle can be displayed and controlled from the [Sonar Tilt] field.



[M]: Manual
[A]: Automatic

Check the tilt angle and beam width. Tap to change the tilt angle by 1-degree, or press and hold to drag and move the tilt angle to your finger position.

How to configure Auto-Tilt settings



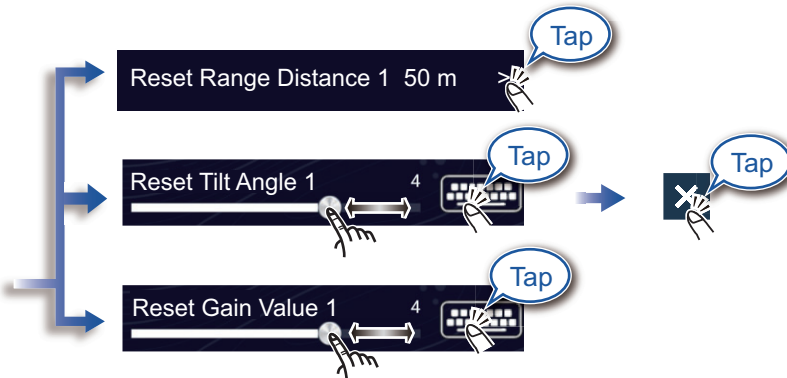
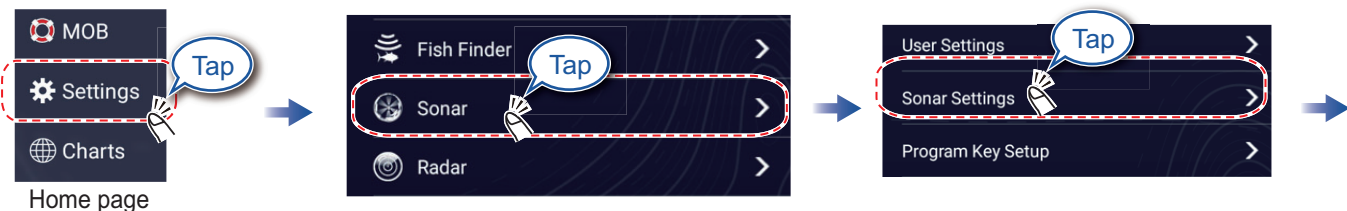
Use the [Auto Tilt Upper End], and [Auto Tilt Lower End] slider bar (or the software keyboard) to set the automatic tilt range.

Note

This function is disabled when the transducer is retracted.

How to reset scan settings (range/ tilt angle/ gain)

The range, tilt angle, and gain settings for scanning can be preset as follows.



When set to OFF, the current range, tilt angle, and gain values are saved and stored when reset is performed.

[Reset Range Distance 1]: Select the range.
 [Reset Tilt Angle 1]/[Reset Gain Value 1]: Set the tilt angle and gain by using the slider bar (or the software keyboard).

When reset is performed, the range, tilt angle, and gain values returns to the value set in here.

Note

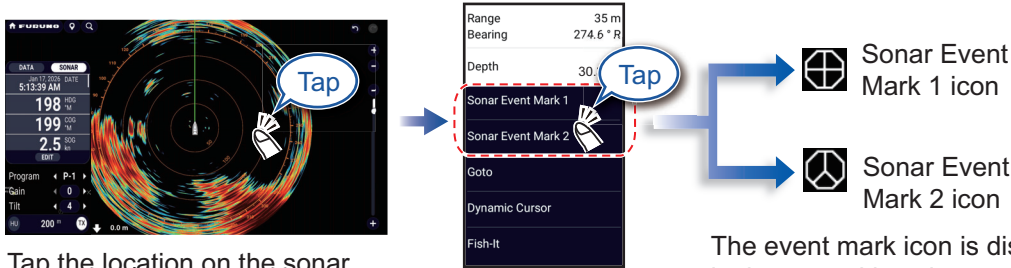
This function is disabled when the auto tilt function is active.



To restore the scan settings to their preset values, select [Reset Scan Setting 1] (or [Reset Scan Setting 2]).

How to register sonar event mark

Sonar event marks can be registered on the sonar display. There are two types of sonar event marks, and the shape of the mark differs. Up to 20 marks can be registered for each type, for a total of 40 marks. When the 21st mark is created (either Event Mark 1 or Event Mark 2), the first sonar event mark automatically disappears.



Tap the location on the sonar display where to set the sonar event mark.

Tap [Sonar Event Mark 1], or [Sonar Event Mark 2] as appropriate.

The event mark icon is displayed in the tapped location on the sonar display. Register all sonar event marks as appropriate. The newest Mark has no number. Following marks are numbered in the right corner 1, 2, 3,...,19 in order.

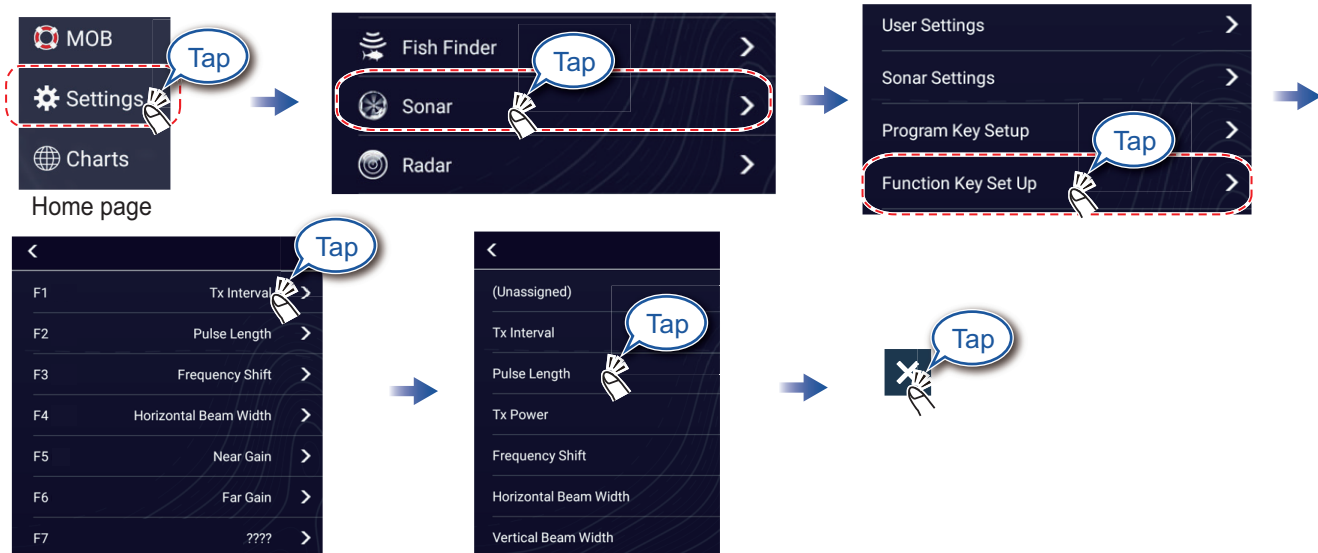
Note

Sonar Event History			
	RANGE	BEARING	DEPTH
⊕	80m	57°	0.0m
⊖	95m	65°	0.0m
⊕	69m	81°	0.0m

When the [Sonar Event History] is set to be shown in the data box, up to three sonar event informations can be displayed.

How to set the function keys

You can assign shortcut functions to the function keys ([F1] to [F10]).

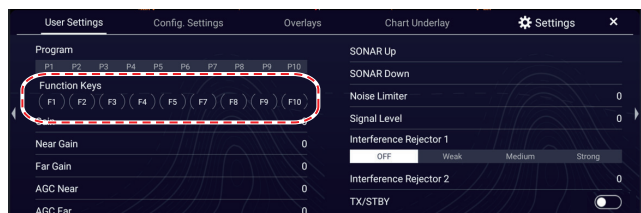


Tap the desired function key from [F1] to [F10].

Select the function to assign from the list.

How to perform the assigned function

In the Layers menu, tap the function key as appropriate to perform the assigned function.



Layers menu → [User Settings] tab → [Function Keys]

•[F1] to [F4]: Constantly displayed in the Layers menu.

•[F5] to [F10]: Displayed in the Layers menu only when assigned.
[Unassigned] keys (set as default) are not displayed.

The function keys of this unit and the Scanning Sonar control unit have different registrable function options.

AIS (Automatic Identification System)

How to show or hide AIS target symbols



Open the Layers menu, tap the [Overlays] tab.



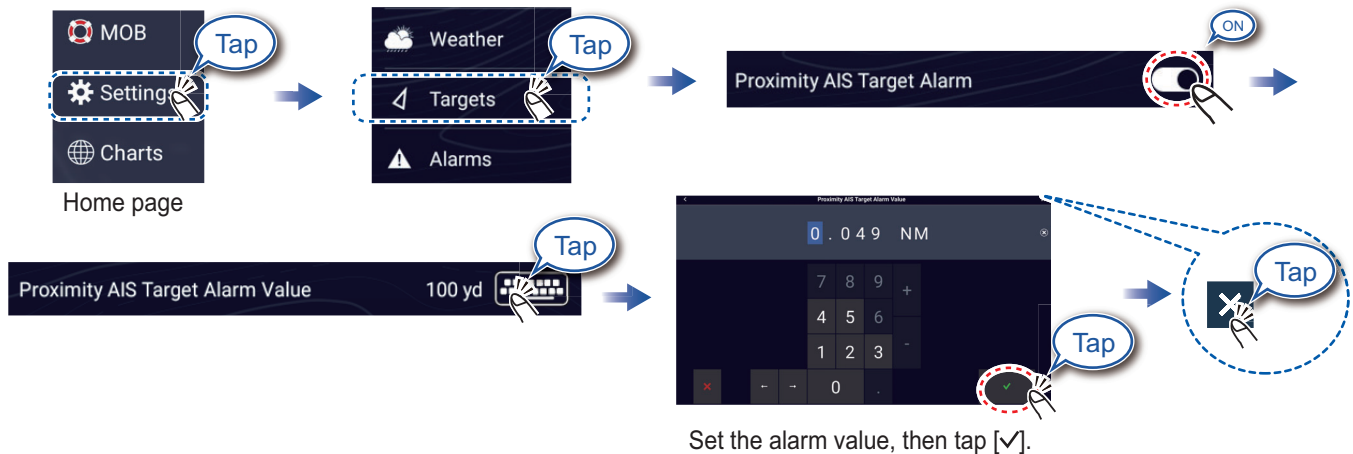
AIS target symbols

	Class A AIS	Class B AIS	BFT* AIS
Activated target	SOG and COG vector Color: Blue	SOG and COG vector Color: Green	SOG and COG vector Color: Blue (filled)
Dangerous target	Color: Red		
Lost target	Color - AIS target: Blue - Cross: Red	Color - AIS target: Green - Cross: Red	Color - AIS target: Blue (filled) - Cross: Red

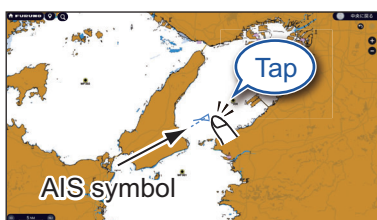
*: Blue Force Tracking

Proximity AIS target alarm

The proximity AIS target alarm releases aural and visual alarms when the distance between own ship and an AIS target is near the alarm value.



How to show AIS target data



Tap AIS symbol.

Tap AIS symbol.

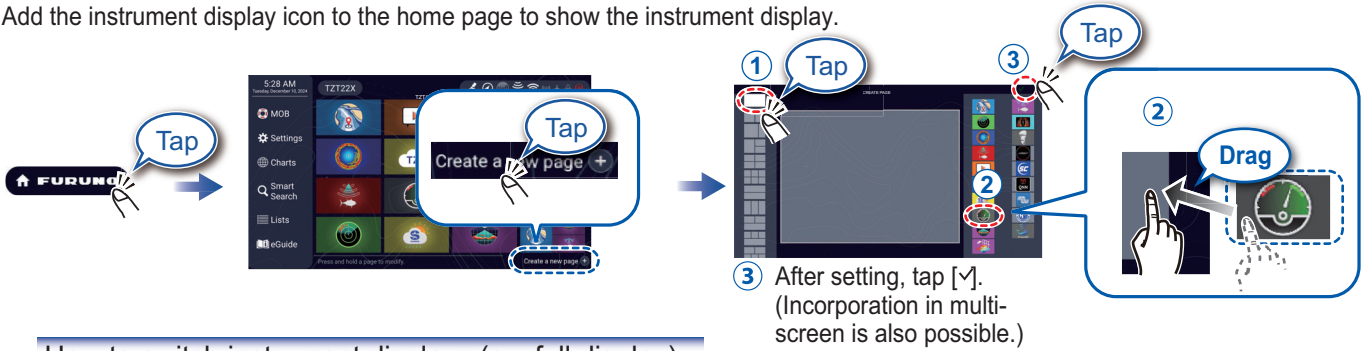
Name	FURUNO NAVNET
MMSI	368007000
COG	210.9°
SOG	5.7 kn
Range	2,244 NM
Bearing	214.3°
CPA	1,866 NM
TCPA	-3d13h
Last Update	0'22s

Instrument Display

With connection of appropriate sensors, the instrument display shows various navigation data.

How to enable the instrument display

Add the instrument display icon to the home page to show the instrument display.



How to switch instrument displays (ex. full display)

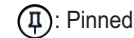


Swipe rightward or leftward to switch between displays.



How to pin the instrument display

When the instrument screen icon is tapped on the home screen, the pinned instrument display is shown. Tap the icon at top right corner of the instrument display to set the pin.



Pinned

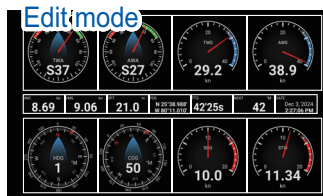


Pin released

How to edit the instrument display



Long tap the instrument display, then select [Edit Page] on the Pop-up menu.



A white line surrounds each indication.

In the edit mode, you can remove, change, add, rearrange indications.

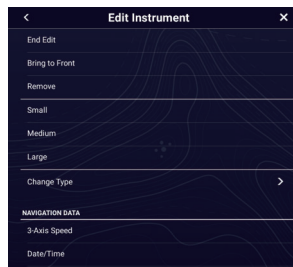
To end the edit mode

Tap the screen, then select [End Edit] on the Pop-up menu.

How to remove or change an indication



In the edit mode, select the indication to remove or change.



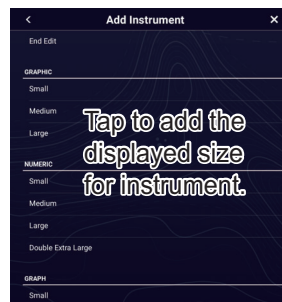
- Remove indication: Tap [Remove].
- Change size: Tap [Small], [Medium], [Large], [Double Extra Large]*.
- Change type: Tap [Change Type], then tap desired size.
- Change indication: Tap indication in [NAVIGATION DATA], [ROUTE INFORMATION], [WIND AND WEATHER], and [ENGINE].

*: Numeric displays only

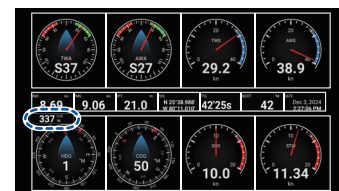
How to add an indication



In the edit mode, tap a location not occupied by an instrument display.



Select a size in desired category.



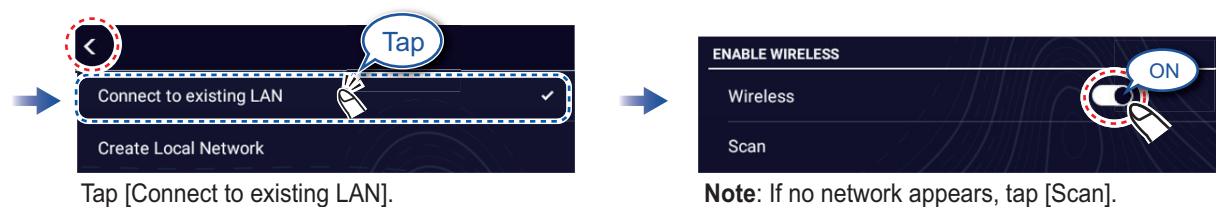
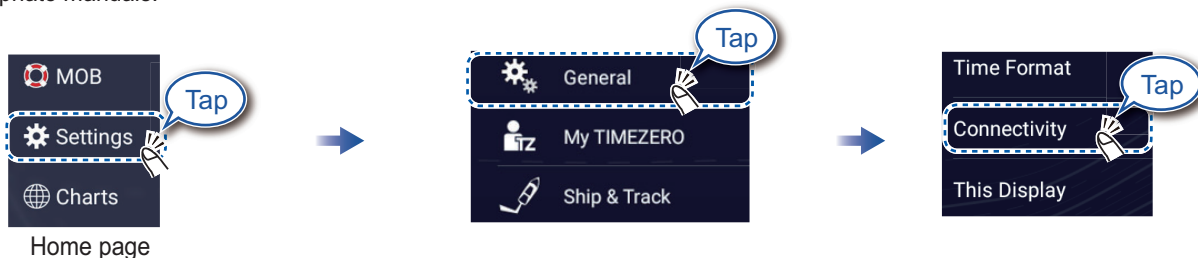
Tap added instrument display to change displayed data (see above).

Wireless LAN Settings

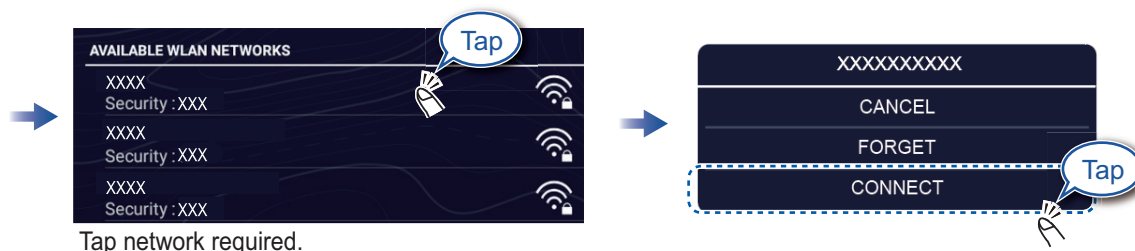
You can connect to the internet with the wireless LAN signal to download weather information, update and check the software version, purchase and update the chart license, or download the chart data.

How to connect to an existing LAN

Connect to the existing LAN to download weather data or update the software. For smartphone and tablet settings, refer to appropriate manuals.



Note: If no network appears, tap [Scan].



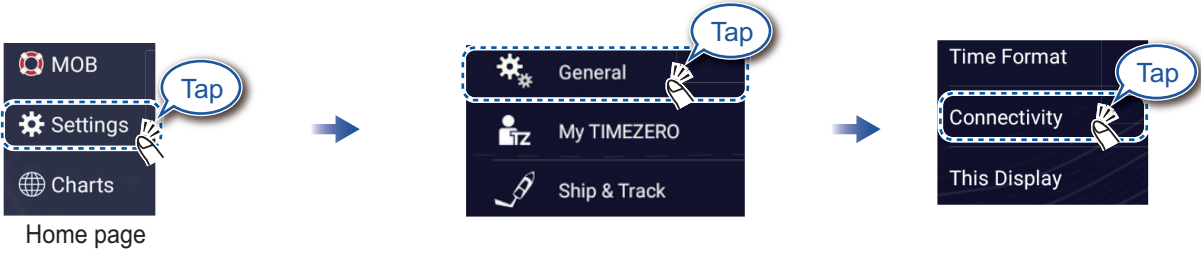
Tap network required.



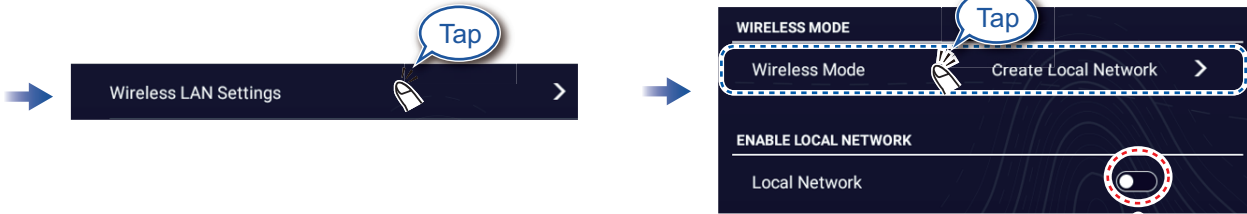
Enter the password, then tap [OK].

How to create a local wireless network

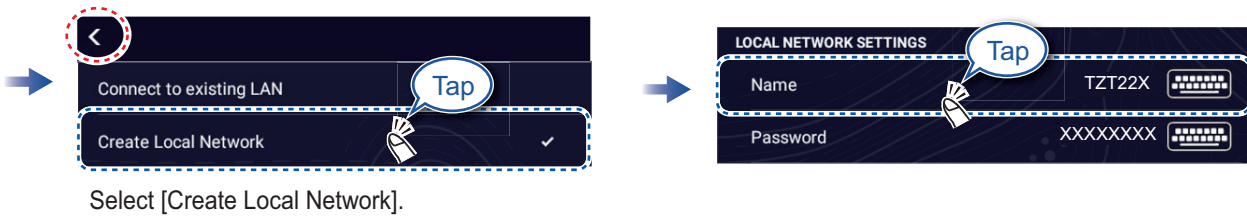
Create a local wireless network when using the NavNet application from a smartphone or tablet.



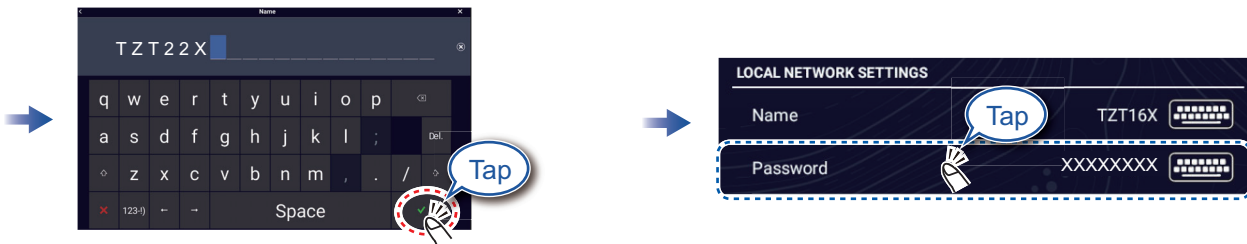
Home page



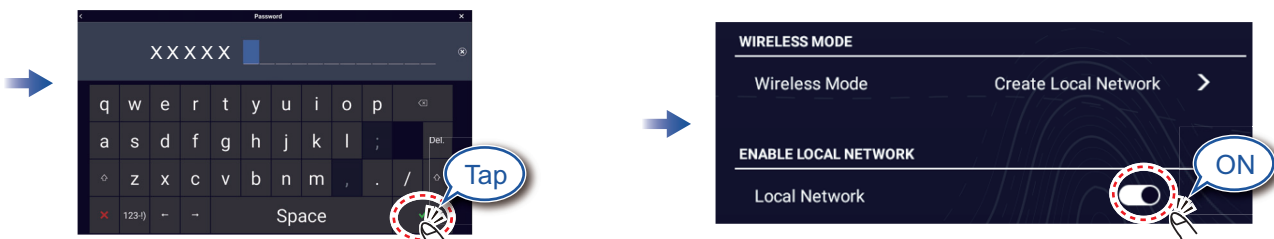
Check that flipswitch is OFF.



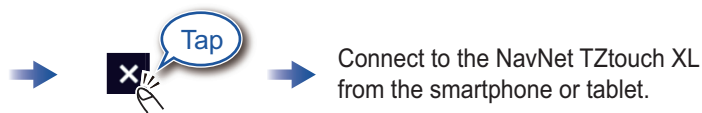
Select [Create Local Network].



Enter the name of the network, then tap [✓].



Enter the password, then tap [✓].



Connect to the NavNet TZtouch XL from the smartphone or tablet.

PSTI Statement of Compliance

We

FURUNO ELECTRIC CO., LTD.

(Name of manufacturer of the product)

9-52 Ashihara-Cho, Nishinomiya City, 662-8580, Hyogo, Japan

(Address of manufacturer of the product)

declare under our sole responsibility that the product

MULTI FUNCTION DISPLAY,
TZT10X, TZT13X, TZT16X, TZT22X, TZT24X

(Product type, batch)

May / 31 / 2029

(Support period for the product)

https://www.furuno.co.jp/en/csr/sociality/customer/product_security.html

(Weblink for latest information and contact to report to the manufacturer security issues)

to which this declaration relates conforms to the following standard(s) or other normative document(s)

Product Security and Telecommunications Infrastructure Act 2022

Product Security and Telecommunications Infrastructure (Security Requirements for
Relevant Connectable Products) Regulations 2023 Schedule 1

On behalf of Furuno Electric Co., Ltd.

Nishinomiya City, Japan
24 May 2024

(Place and date of issue)

Akihiko Kanechika
Department General Manager
Quality Assurance Department

(Signature, name and function of the signatory)



PSTI Statement of Compliance

We FURUNO ELECTRIC CO., LTD.

(Name of manufacturer of the product)

9-52 Ashihara-Cho, Nishinomiya City, 662-8580, Hyogo, Japan

(Address of manufacturer of the product)

declare under our sole responsibility that the product

MULTI FUNCTION DISPLAY,
TZTBBX

(Product type, batch)

MAY / 31 / 2029

(Support period for the product)

https://www.furuno.co.jp/en/csr/sociality/customer/product_security.html

(Weblink for latest information and contact to report to the manufacturer security issues)

to which this declaration relates conforms to the following standard(s) or other normative document(s)

Product Security and Telecommunications Infrastructure Act 2022

Product Security and Telecommunications Infrastructure (Security Requirements for
Relevant Connectable Products) Regulations 2023 Schedule 1

On behalf of Furuno Electric Co., Ltd.

Nishinomiya City, Japan
6 June 2024

(Place and date of issue)

Akihiko Kanechika
Department General Manager
Quality Assurance Department

(Signature, name and function of the signatory)



 **FURUNO ELECTRIC CO., LTD.**

