

FR-12 Screen example



Menu operation

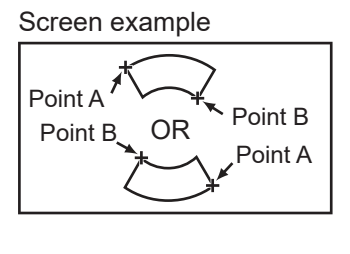
Opens/closes the menu. Selects menu items or menu options. Selects/confirms the item selected from the menu. Cancels the current selection.

How to adjust the range

Increases the display range. (Zoom out) Decreases the display range. (Zoom in)

How to set a target alarm zone

Press the **TARGET ALARM** key. Move the cursor to the point A, then press the **ENTER** key. Move the cursor to the point B, then press the **ENTER** key.



How to adjust display brilliance, panel dimmer

Short Press Adjust Press the **CANCEL/HL OFF** key to close the menu.

Brill/Panel		◀ Min	Max ▶
Brill (1~16)	16	[Progress bar]	
Panel (1~8)	8	[Progress bar]	

[ENTER / ↑ / ↓]: Select
[CANCEL/HL OFF]: Close
[Brill]: Screen brightness
[Panel]: Panel dimmer Select as required.

How to adjust the gain/sea/rain

Rotate the **GAIN, A/C SEA** or **A/C RAIN** knob.

Gain/Sea/Rain		
GAIN MAN (0~100)	52	[Progress bar]
SEA MAN (0~100)	48	[Progress bar]
RAIN MAN (0~100)	48	[Progress bar]

[CANCEL/HL OFF]: Close
The window for Gain/Sea/Rain adjustment appears.

[GAIN]: Adjusts the sensitivity.
[SEA]: Reduces the sea clutter.
[RAIN]: Reduces the rain clutter.
Note: Press the knobs to activate the function for the F1/F2/F3 keys.

Hide the heading line

Press and hold to hide the heading line, remove cursor selected marks/TT targets, or sleep AIS targets.

Transmit/Standby

Toggles the radar between standby and transmit modes.

Power on/off

Press and hold to turn the power on/off.

How to measure the bearing, range to a target

Measure the bearing to a target.



Press the **EBL** key.

Use the cursorpad to place the EBL through the center of the target.

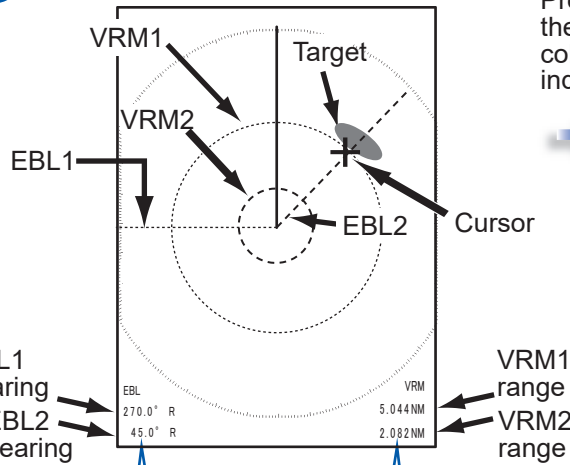


Measure the range to a target.



Press the **VRM** key.

Use the cursorpad to put the cursor on the inside edge of the target.



Read EBL bearing (shown in blue).

Read VRM range (shown in blue).

Press **ENTER** key to anchor the EBL and VRM. The original color of the corresponding indication is restored.



Press the **EBL** or **VRM** key to select the marker to erase. Press the **CANCEL/HL OFF** key to erase the selected marker and its indication.

How to off-center ship position

Manual off-center



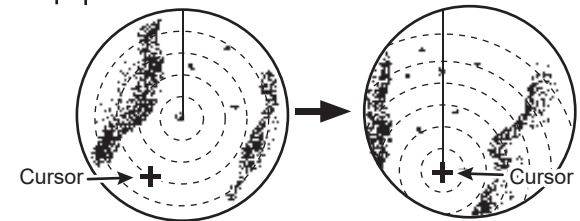
Moves the ship position to the current cursor position.



Custom off-center



Moves the ship position to the position which preset.



Press again to deactivate.

How to select a display mode



Press the **MENU** key.

- Menu
- Brill/Color
- Display**
- Echo
- Custom 1
- Custom 2
- Custom 3
- Alert Settings
- Trails
- Tuning/Channel
- Others
- OS/Barge Mark
- Target
- TT



Select [Display] and press **ENTER**.

- Display
 - Display Mode : Head Up
 - Zoom : Off
 - Zoom Reference : True
 - Off-center Mode : Custom
 - Save Off-center
 - Echo Area : Oval
 - Text Display
 - Data Box : Off
 - Gain/Sea/Rain Bar
- [ENTER]: Enter [CANCEL/HL OFF]: Back
[MENU]: Exit



Select [Display Mode] and press **ENTER**.

- Head Up**
- Course Up
- North Up
- True Motion
- Stern Up




Select display mode and press **ENTER**.

TLL output, origin mark



[Others] → [TLL Mode] menu.

[TLL Output]: Send the latitude and longitude of the cursor position to a chart plotter.

[Origin Mark]: Enter an origin mark () at the cursor position on the radar display.

[Both]: Send the target position to a chart plotter and enter an origin mark on the radar display.

How to change the trail time



To change the trail time, press the **TRAILS** key several times until the desired time appears.

ex): [15 S] → [30 S] → [1 min] → [3 min] → [6 min] → [15 min] → [30 min] → [Continuous] → [Off] → [15 S]...

Note: Press and hold the **TRAILS** key to erase the track from the screen.

Custom set up



Radar settings can be adjusted to meet navigation needs.

Note: [Custom 1], [Custom 2] and [Custom 3] must be set to [On] before setting.

The menu items shown below are available for custom set up.

- [Gain Mode] • [Manual Gain] • [Sea Mode] • [Auto Sea] • [Manual Sea] • [Rain Mode] • [Auto Rain]
- [Manual Rain] • [A/C Auto] • [Pulse Length] • [Echo Stretch] • [Echo Average] • [Int Rejector]
- [Display-Dynamic] • [Display-Curve] • [Color Erase] • [Target Analyzer] • [T.A. Mode] • [RezBoost]

(Some items may not be available depending on the antenna connected.)